

# ENVIRONMENTAL MONITORING REPORT

BASED ON DATA GENERATED

FROM

**APRIL – SEPTEMBER 2022**



FOR

## **PENGUIN TRADING & AGENCIES LIMITED**

MAA PARVATI ENCLAVE, 'D' BLOCK, 2<sup>ND</sup> FLOOR, At/Po: BARBIL - 758035,  
District: KEONJHAR, ODISHA  
PHONE: 06767-275621

## **RAIKELA – TANTRA IRON ORE MINES**

Village: Raikela, District: Sundargarh

Prepared By:

### **Cleenviron Private Limited**

D-124, KOELNAGAR, ROURKELA, ODISHA

Tele fax: 0661 – 2475746

Email: [cleenviron@gmail.com](mailto:cleenviron@gmail.com)

## TABLE OF CONTENTS

<b>Chapter No</b>	<b>Name of Chapter</b>	<b>Page No</b>
1	INTRODUCTION	5
2	PRESENT STATUS OF THE PROJECT	5
3	ASPECTS CONSIDERED FOR ENVIRONMENTAL MONITORING	9
4	SAMPLING LOCATIONS	11
5	METHODOLOGY OF SAMPLING & ANALYTICAL PROCEDURES	21
6	DATA ANALYSIS	22
7	CONCLUSION	50

## LIST OF TABLES

Table No	Name of Table	Page No
2.1	Dimension of Working Quarries	5
4.1	Ambient Air Quality Monitoring Stations	12
6.1	Summary of Micro-meteorological Data	23
6.2	Ambient Air Quality Data for Station A-1	26
6.3	Ambient Air Quality Data for Station A-2	27
6.4	Ambient Air Quality Data for Station A-3	28
6.5	Ambient Air Quality Data for Station A-4	29
6.6	Ambient Air Quality Data for Station A-5	30
6.7	Ambient Air Quality Data for Station A-6	31
6.8	Ambient Air Quality Data for Station A-7	32
6.9	Fugitive Dust Emission Monitoring Data	36
6.10	Karo Nala Water (100m Upstream of the ML Area)	37
6.11	Karo Nala Water (100m Down stream of ML Area)	38
6.12	Samij Nala Water (100m Upstream of the ML Area)	38
6.13	Samij Nala Water (100m Down stream of ML Area)	39
6.14	Kuradih Nala Water (100m Upstream of the ML Area)	40
6.15	Kuradih Nala Water (100m Down stream of ML Area)	41
6.16	Teherai Nala Water (100m Upstream of the ML Area)	42
6.17	Teherai Nala Water (100m Downstream of ML Area)	42
6.18	Ground Water Quality Data for the month of May	44
6.19	Ground Water Quality Data for the month of August	44
6.20	Ground Water Level Data	45
6.21	Noise Level Data from April to September	48
6.22	Soil Quality Data for the month of June	49

## LIST OF FIGURES

Figure No	Name of Figure	Page No
1.1	Location Map of The Project	6
1.2	Vicinity Map of Raikela – Tantra Iron Mines	7
2.1	Surface Plan of Raikela – Tantra Iron Mines	8
4.1	Ambient Air Monitoring Location Map	13
4.2	CAAQMS & Fugitive Dust Monitoring Location Map	14
4.3	Surface Water Quality Sampling & Stream Flow Measurement Location Map	17
4.4	Ground Water Quality Sampling & Level Measurement Location Map	18
4.5	Noise Level Study & Soil Location Map	20
6.1	Wind Rose Diagram and wind class distribution chart for 24 Hrs	23
6.2	Wind Rose Diagram and wind class distribution chart for 6 - 14 Hrs	24
6.3	Wind Rose Diagram and wind class distribution chart for 14 - 22 Hrs	24
6.4	Wind Rose Diagram and wind class distribution chart for 22 - 6 Hrs	25
6.5	Graphical Representation of PM <sub>2.5</sub> Values in Core & Buffer Zone	32
6.6	Graphical Representation of PM <sub>10</sub> Values in Core & Buffer Zone	33
6.7	Graphical Representation of SO <sub>2</sub> Values in Core & Buffer Zone	34
6.8	Graphical Representation of NO <sub>2</sub> Values in Core & Buffer Zone	35
6.9	Graphical Representation of PM Values for Fugitive Dust Emission Monitoring in Core Zone	36
6.10	Seasonal Fluctuation of Ground Water Level	46

## 1.0 INTRODUCTION

Raikela – Tantra Iron Mines of M/s Penguin Trading & Agencies Ltd. is an Iron ore mine operating since 1987 in the district of Sundargarh of Odisha State. The mining lease covering an area of 49.372 ha is located in the villages Raikela and Tantra (**Figure No: 1.1**), under Bonai sub-division of Sundargarh district. The area is approximately 100 kms from the Steel city of Rourkela by road and 10 kms from the mining town Koida. A vicinity map up to 10 kms radius from the center of the lease is given in **Figure No: 1.2**. Presently (during the period, i.e from April to September 2022) the mine has produced 6, 64, 400.00 MT of Iron ore by mechanized method of mining. As per EIA notification 2006 the mine has already received Environmental Clearance from State Environment Impact Assessment Authority (SEIAA), Odisha on 17<sup>th</sup> March, 2022 vide EC Identification no: EC22B001OR172761, File No: 215287/64-MINB1/12-2021 for production of Iron Ore up to 2.160 million ton per annum.

## 2.0 PRESENT STATUS OF THE PROJECT

At present from April 2022 to September 2022 the mine has produced Iron Ore of 6, 64, 400.00 MT, apart from this 4, 73, 257.752 MT of Iron ore has been dispatched to the outside parties like Steel and Sponge Iron Plants by road. During the financial year 2020-21 the mines has produced Iron Ore to the tune of 10, 78, 900 MT. The surface plan of the mines is given in **Figure No: 2.1**

The operation of the mines is being carried out in all total three no. of quarries in two sections, the Raikela section and Tantra section, Raikela section is having two quarries i.e. Raikela & Raikela West in operation. The detail bench parameters of all the quarries are as follows:

**Table No. 2.1: Dimensions of Working Quarries**

Quarry Name	Quarry Size (in m)			Top RL	Bottom RL	No. of Benches	Bench Size (in m)	
	L	W	D				W	H
<b>Raikela &amp; Tantra</b>	447	183	39	830	791	07	12	06
<b>Joint Mining</b>	217	103	42	814	772	07	12	06

The present working depth of Raikela & Tantra section is between 830m to 791m AMSL. In Joint Mining Section present working depth of the pit is between 814m to 772m AMSL. The working has gone down from 830m AMSL to 791m AMSL in Raikela & Tantra section and from 814m AMSL to 772m AMSL in Joint Mining section, but it has not encountered the ground water table so far.

The project proponent has complied with the specific conditions mentioned in the environmental clearance and the status of compliance is also provided.

Figure No: 1.1 Location Map of the Project

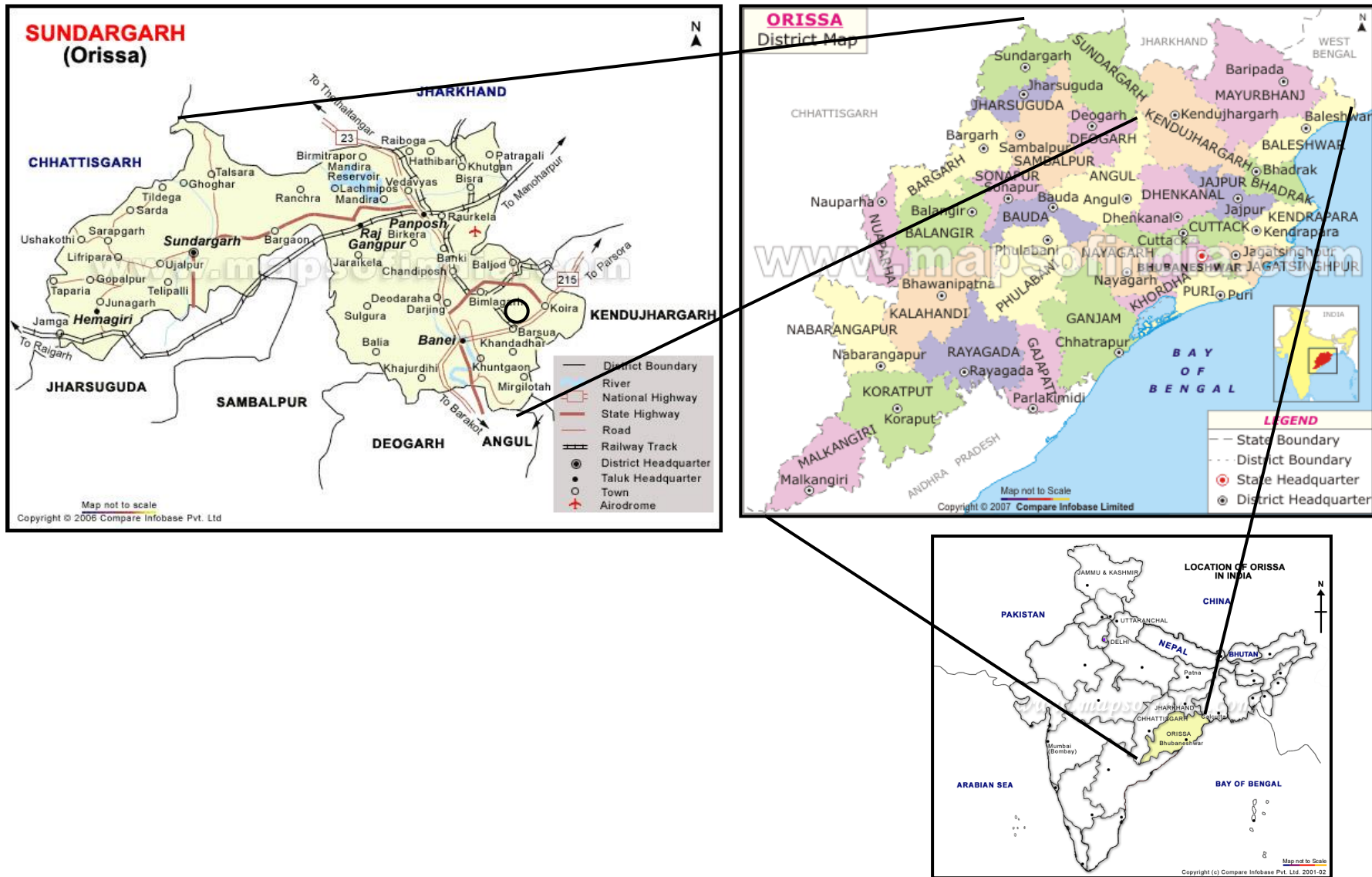


Figure No: 1.2 VICINITY MAP

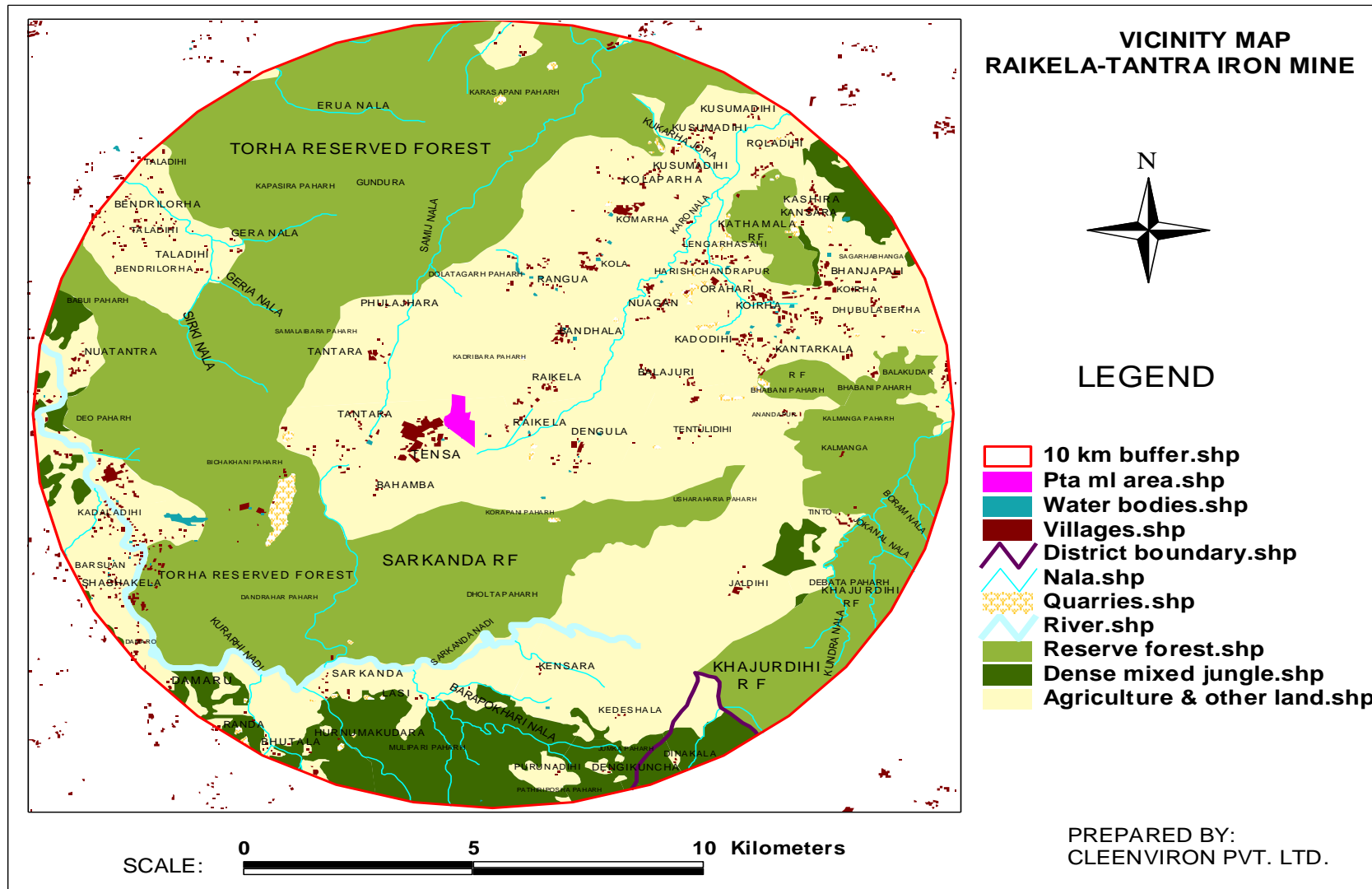
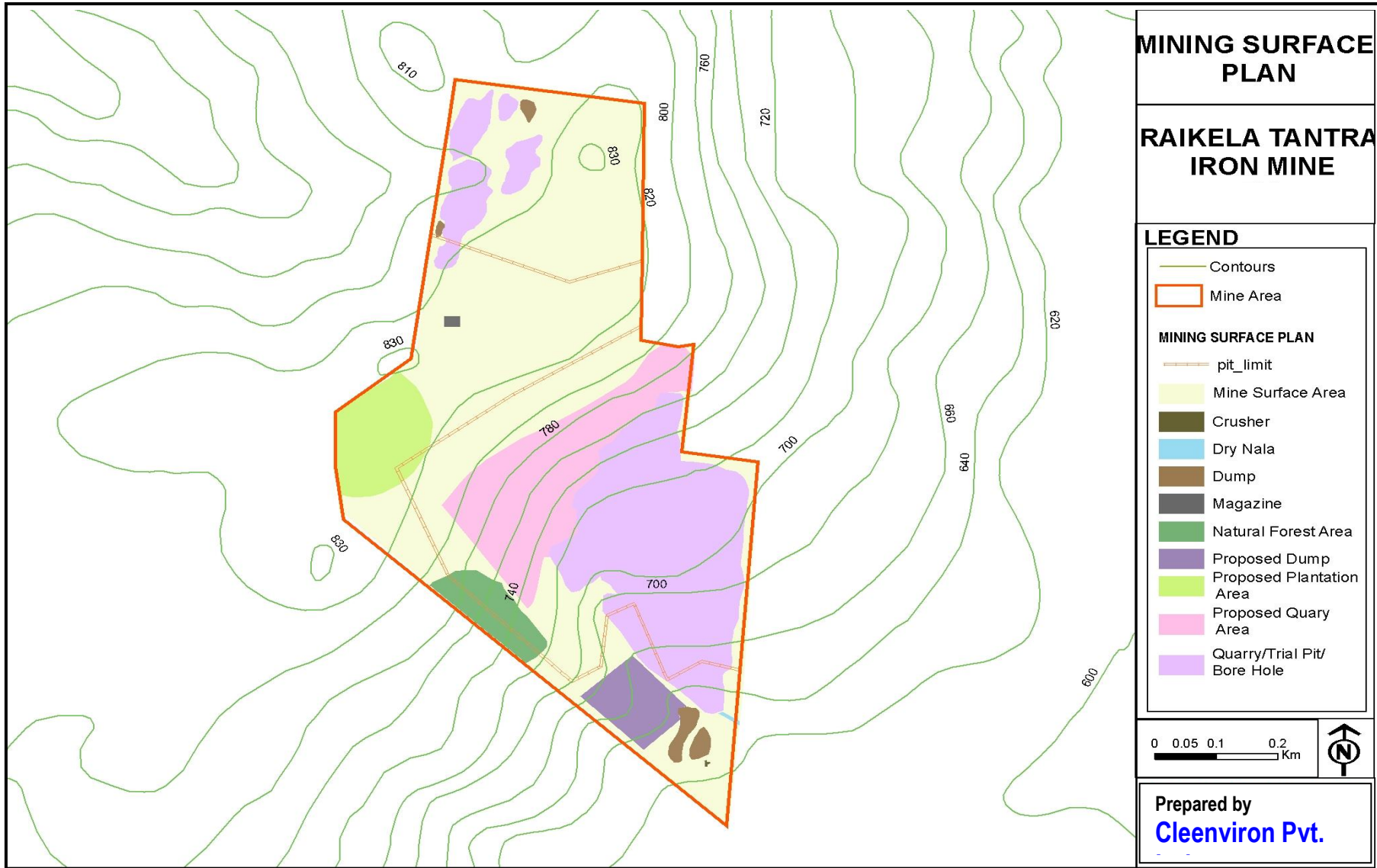


Figure No: 2.1 SURFACE PLAN OF RAIKELA – TANTRA IRON MINE





## General Conditions:

1. Three continuous ambient air quality monitoring stations are fixed within the core zone and four in the buffer zone are fixed in consultation with SPCB and considering the meteorological data. Monitoring is being carried out with a frequency of once in every month at each locations of buffer zone for the parameters like PM2.5, PM10, SO<sub>2</sub>, NO<sub>2</sub> & CO and three continuous ambient air quality monitoring stations are being operated continuously and 24 hours monitoring data are recorded.
2. Fugitive dust emission monitoring is also carried out at 5 locations within the mining lease area on twice weekly basis for the parameter Particulate Matter and data thus collected is reported.
3. The Noise level is monitored on once in a week basis in the work places and once in a month in buffer zone of the mining lease area.
4. Ground water level and quality is monitored on quarterly basis and surface water quality is monitored every month and data thus collected is reported.
5. To know the status of soil quality in and around the mining lease area, Soil samples are collected from two locations on six monthly basis and data thus collected are reported.
6. The regular monitoring is being carried out by NABL accredited Laboratory.
7. During the period of six months from April – September 2022 the project proponent has done plantation of 11650 saplings within and outside mining lease area including species like, Karanja, Neem, Teak, Neem, Amla, Ukalipotas, Gambhari, Imlee, Chakunda, Sirish, Simaruba, Sisoo, Jack-fruit, Gulmohar, Bamboo, Khaeera, Accacia SPP, Accacia Magnum, Baula, Buken, Sitafala in and around backfilled area, stabilized OB dump, safety zone as replacement & along Karo Nala, Kelabagan Pond, Raikela Pond, Dengula Devimala and Tensa Field out of which 9005 saplings have survived till date. The survival rate is found to be around 78%.

### 3.0 ASPECTS CONSIDERED FOR ENVIRONMENTAL MONITORING

This report is based on the monitoring results generated from April to September 2022 covering summer and monsoon seasons of the year. Ambient Air Quality within the buffer zone, Surface Water Quality & Noise Level monitoring also in buffer zone was carried out on monthly basis at each location. Ambient Air Quality in core zone was monitored 24 hours continuous basis and Fugitive dust emission monitoring was carried out on daily basis at each locations. The Noise monitoring within core zone was also monitored weekly basis. However other aspects like, Ground Water quality, Ground Water level, Stream Flow measurement and Stack emission from DG sets are carried out on quarterly basis, i.e. during May and August months of the year. Soil quality monitoring is carried out on six monthly basis. Environmental Monitoring data were generated at Raikela & Tantra Iron Mines and its buffer zone covering the following aspects in detail.

- i. Micro-meteorological study
- ii. Ambient Air Quality Study
- iii. Fugitive Dust Emission Monitoring
- iv. Surface Water Quality Study
- v. Ground Water Quality Study
- vi. Ground Water Level Study
- vii. Soil Quality Study
- viii. Noise Level Study

Monitoring of environmental parameters for collection of data involves field work, which is described below:

### **3.1 Micro-meteorological Monitoring**

To record the hourly meteorological data one automatic weather monitoring station has been installed within the ML area near the mines site office and parameters like, wind speed, wind direction, temperature, relative humidity and rainfall is being recorded.

### **3.2 Ambient Air Monitoring**

As per the letter no 14257/Ind. I-Con-(Misc) 1533, Dated: 01.12.2018 from SPCB, Bhubaneswar and recommendation of CSIR – NEERI, the ambient air quality monitoring stations are fixed which are as follows. Total 3 (Three) monitoring stations are fixed within the core zone including 1 (One) at the entry and exit point of the ML area and 4 (Four) in the buffer zone. The monitoring locations are fixed according to the micro-meteorological data and in consultation with State Pollution Control Board. The monitoring was carried out for parameters like PM<sub>2.5</sub>, PM<sub>10</sub>, SO<sub>2</sub>, NO<sub>2</sub> & CO and monitoring was carried out once in every month at each location within the buffer zone. Within core zone continuous monitoring for 24 hours is carried out in all the three locations. For collection of samples Respirable Dust sampler and Fine Particulate Sampler was placed at each locations, sampling and analytical techniques are followed as per the standard method of ambient air sampling and analysis.

### **3.3 Fugitive Dust Emission Monitoring**

To assess fugitive dust emission level, total 5 (Five) monitoring stations are fixed in the core zone. The monitoring locations are fixed nearer to the most dust generation sites like working pits (Raikela & Tantra) of the Mine and downwind of the OB dump, Weigh Bridge and Screen Plant, within the quarry. The monitoring was carried out for parameter Particulate Matter and monitoring was carried out on daily basis at each locations. For collection of samples Respirable Dust Samplers are fixed at all locations, sampling and analytical techniques are followed as per the standard method of sampling and analysis.

### **3.4 Surface Water Quality Study**

Total eight locations were fixed for sampling of the surface water quality from Karo River, Samij Nallah, Teherai Nallah & Kuradihi Nallah which are flowing near the ML area within the buffer zone of 10kms. The sampling and analysis of all the water bodies mentioned were carried out on monthly basis from up stream of ML area as well as downstream of ML area. The parameters analyzed are as per the surface water quality standards, IS: 2296 (Class C). Few parameters like pH, Temperature and DO are recorded at the site. For other parameters the samples were fixed and preserved as per the standard methods of sampling by APHA 23<sup>rd</sup> edition.

### **3.5 Ground Water Quality Study**

To find out the ground water quality of the area, a net work of 5(five) existing dug wells are fixed and the sampling was carried out on quarterly basis during month of May and August, as per the environmental clearance conditions of MoEF. The parameters analyzed were as per the drinking water standards of IS 10500. Few parameters like pH and Temperature are recorded at the site. For other parameters the samples were fixed and preserved as per the standard methods of sampling by APHA 23<sup>rd</sup> edition.

### **3.6 Ground Water Level Study**

To assess the ground water availability and fluctuation, a net work of 5 (Five) existing dug wells are fixed (from where the ground water quality study were carried out) for ground water level measurement. To measure the ground water level piezometers are fixed at each dug wells and the variation of ground water level are being studied on quarterly basis during the months of May for summer season and August for monsoon season.

### **3.7 Noise Level Study**

Noise monitoring were carried out at 5 (Five) different locations within the Core zone once in every week and 4 (Four) locations within the buffer zone once in every month. The measurements were done by Sound Level Meter, make: Envirotech Instruments Pvt. Ltd., New Delhi, in dB(A) at a height of 1.5 meter, above ground level and away from the sound reflecting sources like walls and buildings etc.

### **3.8 Soil Quality Monitoring**

Soil monitoring were carried out at 2 (two) different locations, one within the Core zone and one location within the buffer zone, once in six months period during the month of May.

## **4.0 SAMPLING LOCATIONS**

### **4.1 Ambient Air Quality Monitoring**

Three ambient air quality monitoring station were fixed within the core zone and four stations were fixed in the buffer zone. The locations of monitoring stations are shown in the **Figure No: 4.1 & 4.2**. General precautions were taken to position the Respirable Dust Samplers at all the locations. The descriptions of the Ambient Air Monitoring Stations are as follows:

#### **A-1 Near Mines Site Office:**

The sampling station is located within the core zone to assess the present level of pollution due to the overall mining operation from both the working quarries.

#### **A-2 Tantra Section Near Lease Boundary:**

The sampling station is located within the core zone to assess the present level of pollution due to the overall mining operation from tantra section of the mines and also the emissions from the new crusher plant.

#### **A-3 Near Main Entry & Exit Gate of the Mine:**

The sampling station is located within the core zone to assess the present level of pollution due to the overall mining operation and emission of dust due to ore and overburden hauling by trucks.

#### **A-4 Mines Office Area:**

The sampling station is located nearest to the core zone (500m from the South-East ML boundary) to assess the direct effect of mining operations on the background air quality and receptors.

#### **A-5 Village Dengula:**

The location was selected outside the core zone and to assess the effect of mining and hauling of Iron Ore from the mine to outside Crusher Plants and Sponge Iron Plants on the background air quality and receptors.

#### **A-6 Tensa Town:**

This location is situated in the buffer zone of the mine and selection of this location was done as to assess the effect of the mining operation on the local receptors, as this town is falling in the predominant wind direction towards west - south-west of the lease area.

#### **A-7 Village Bahamba:**

This location is situated in the buffer zone of the mine and selection of this location was done as to assess the effect of the mining operation on the local receptors, as this village is falling in the predominant wind direction towards south-west of the lease area.

The distances and directions of the Ambient Air Quality monitoring locations are summarized below:

**Table No 4.1: Ambient Air Quality Monitoring Stations**

SI No	Name of Location	Zone	Distance	Direction
1	Near Mines Site Office	Core	-	-
2	Near Lease Boundary of Tantra Section	Core	-	-
3	Near Main Entry & Exit Gate of the Mine	Core	-	-
4	Mines Office Area	Buffer	500 m from ML Area	SE
5	Village Dengula	Buffer	2.5 km from ML Area	SE
6	Tensa Town	Buffer	1.3 km from ML Area	W
7	Village Bahamba	Buffer	2.6 km from ML Area	SW

#### **4.2 Fugitive Dust Monitoring:**

Five fugitive dust emission monitoring locations are established inside the core zone, to find out the amount of dust being generated from the source during the excavation, drilling & hauling of Iron Ore and overburden. The locations of the stations are shown in the **Figure No: 4.2**. The descriptions of fugitive emission monitoring locations are as follows:

##### **F-1 Downwind of Excavator/ Drill Machine within the Quarry (Raikela Section)**

This location was fixed within quarry of Raikela section and while operation of mining equipments are on. Towards the down wind direction of the whole quarry area within a distance of 25m, one Respirable Dust sampler was set for 8 hours operation and the parameter monitored is PM10 general precautions are obeyed while collection of samples.

##### **F-2 Downwind of Excavator/ Drill Machine within the Quarry (Tantra Section)**

This location was fixed within quarry of Tantra section and while operation of mining equipments are on. Towards the down wind direction of the whole quarry area within a distance of 25m, one Respirable Dust sampler was set for 8 hours operation and the parameter monitored is PM10 general precautions are obeyed while collection of samples.

##### **F-3 Downwind of OB Dump Area**

This location was fixed to evaluate the amount of pollution load on the ambient air due to moving of heavy earth moving equipments like Dozer, Dumpers etc. The sampler was being operated for continuous of 8 hours at the downwind of OB dump at a distance of 25m from the dump and parameter like PM10 is measured.

##### **F-4 Downwind of Weigh Bridge**

This location was fixed to evaluate the amount of pollution load on the ambient air due to moving of loaded Dumpers for weighing. The sampler was being operated for continuous of 8 hours at the downwind direction at a distance of 25m from the weigh bridge and parameter like PM10 is measured.

##### **F-5 Downwind of Screen Plant**

This location was fixed to evaluate the amount of pollution load on the ambient air due to screening operation of Iron Ore and excavated ROM. The sampler was being operated for continuous of 8 hours at the downwind direction at a distance of 25m from the Screen Plant and parameter like PM10 is measured.

Figure No: 4.1 AMBIENT AIR MONITORING LOCATIONS IN BUFFER ZONE

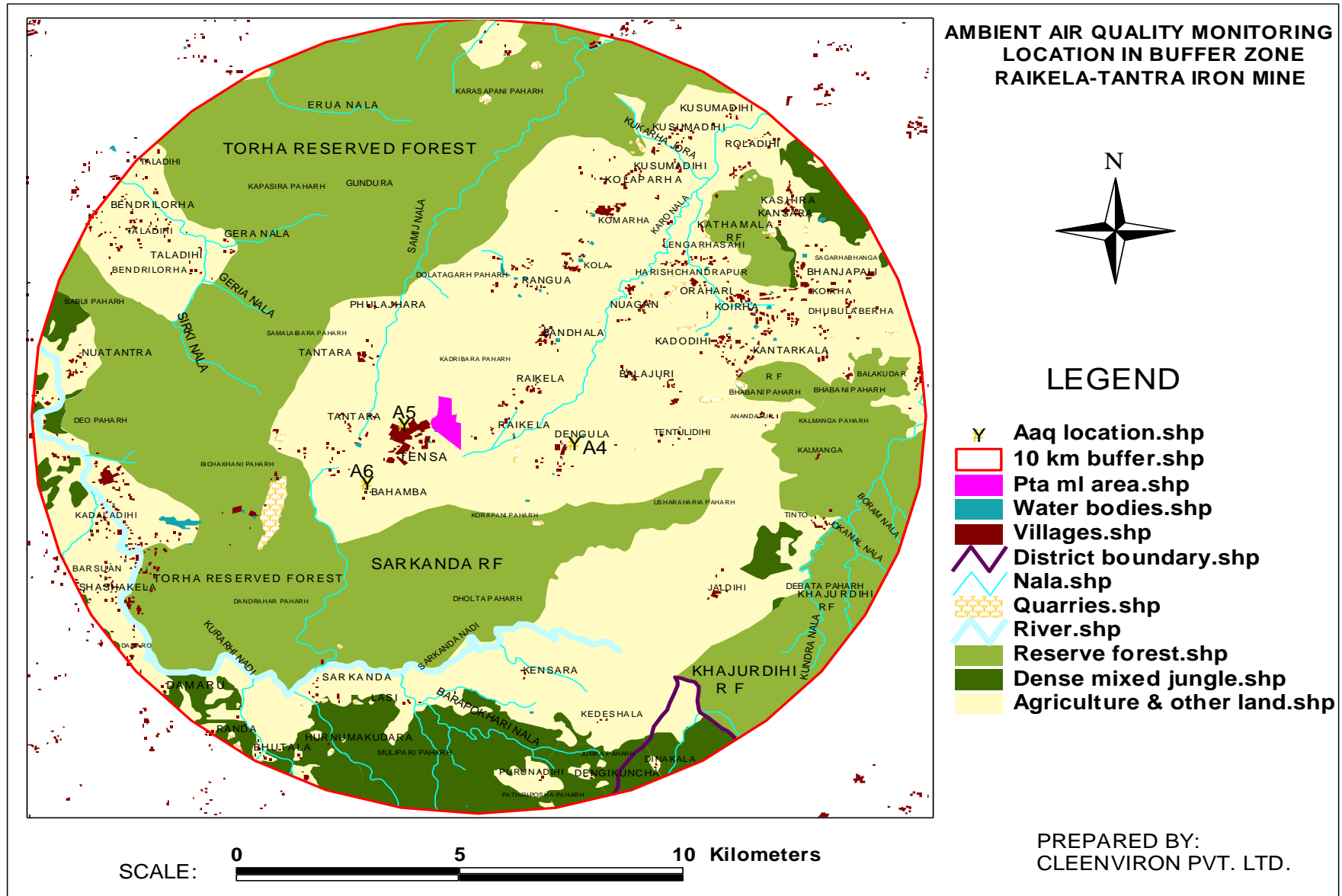
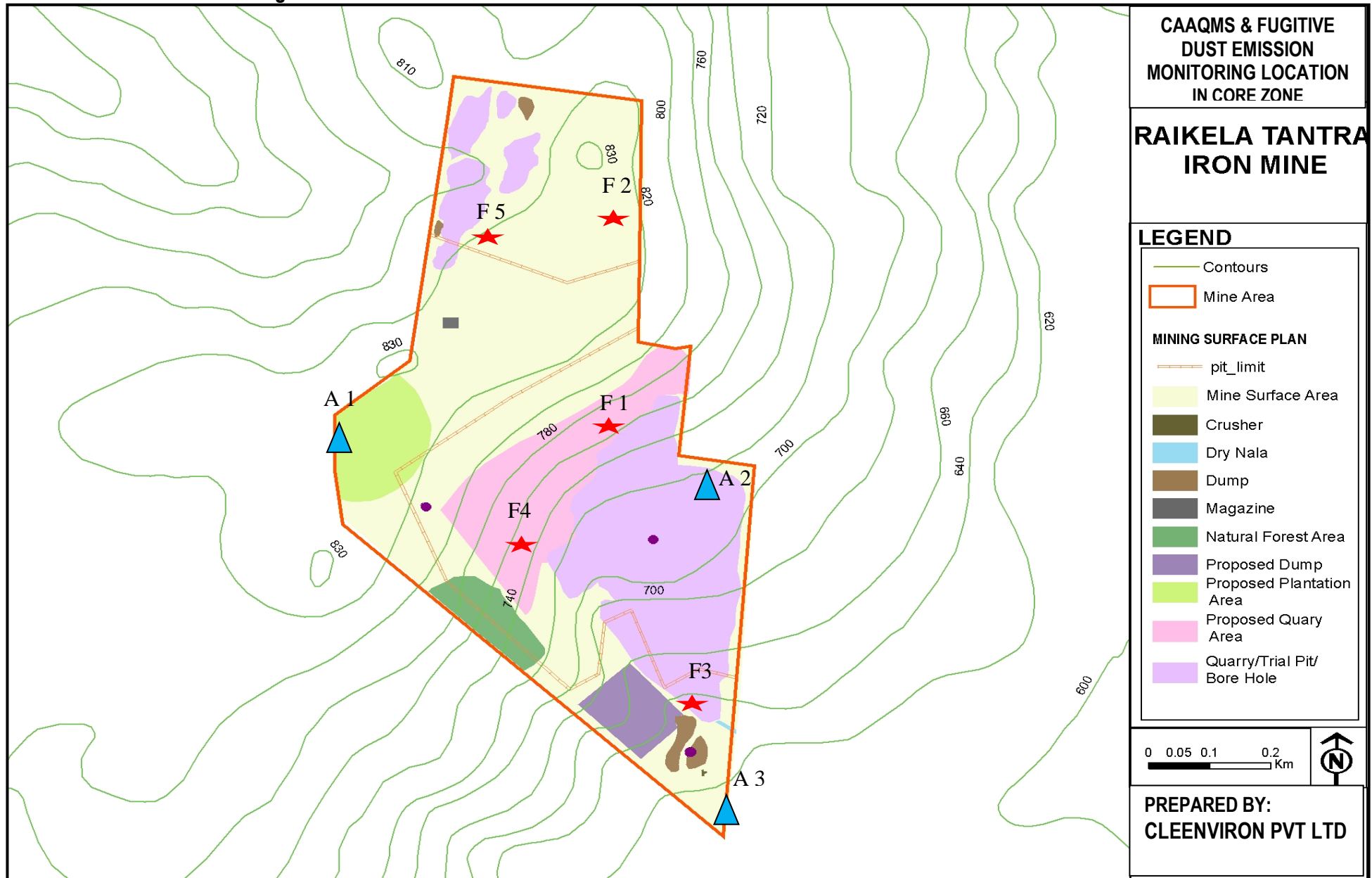


Figure No: 4.2 CAAQMS & FUGITIVE DUST EMISSION MONITORING LOCATIONS IN CORE ZONE



#### **4.3 Surface Water Quality:**

In order to assess the quality of water from the surface water bodies mentioned due to the mining activity. Two sampling locations were set one at 100 m up-stream of ML area and second at 100 m downstream of ML area on each of the water bodies, the locations of sampling are shown in the **Figure No: 4.3**. The samples were being collected on monthly basis. The descriptions of the locations are given below:

##### **SW-1 Karo River Water before ML Area**

The sample was collected from Karo river around 100 m up stream of the ML area and analyzed for 31 parameters as per the Surface Water Quality Standards IS 2296 (Class – C) to find out the back ground concentration of the parameters.

##### **SW-2 Karo River Water after ML Area**

The sample was collected from Karo river around 100 m downstream of the ML area and analyzed for 31 parameters as per the Surface Water Quality Standards IS 2296 (Class – C) to find out the effect of mining activity on concentration of the parameters in the downstream of the river.

##### **SW-3 Samij Nallah Water before ML Area**

The sample was collected from Samij nallah around 100 m up stream of the ML area and analyzed for 31 parameters as per the Surface Water Quality Standards IS 2296 (Class – C) to find out the back ground concentration of the parameters.

##### **SW-4 Samij Nallah Water after ML Area**

The sample was collected from Samij nallah around 100 m downstream of the ML area and analyzed for 31 parameters Surface Water Quality Standards IS 2296 (Class – C) to find out the effect of mining activity on concentration of the parameters in the downstream of the nallah.

##### **SW-5 Kuradihi Nallah Water before ML Area**

The sample was collected from Kuradihi nallah around 100 m up stream of the ML area and analyzed for 31 parameters Surface Water Quality Standards IS 2296 (Class – C) to find out the back ground concentration of the parameters.

##### **SW-6 Kuradihi Nallah Water after ML Area**

The sample was collected from Kuradihi nallah around 100 m downstream of the ML area and analyzed for 31 parameters Surface Water Quality Standards IS 2296 (Class – C) to find out the effect of mining activity on concentration of the parameters in the downstream of the nallah.

##### **SW-7 Teherai Nallah Water before ML Area**

The sample was collected from Teherai nallah around 100 m up stream of the ML area and analyzed for 31 parameters Surface Water Quality Standards IS 2296 (Class – C) to find out the back ground concentration of the parameters.

##### **SW-8 Teherai Nallah Water after ML Area**

The sample was collected from Teherai nallah around 100 m downstream of the ML area and analyzed for 31 parameters Surface Water Quality Standards IS 2296 (Class – C) to find out the effect of mining activity on concentration of the parameters in the downstream of the nallah.

#### **4.4 Ground Water Level:**

Ground Water level were monitored by fixing a network of existing dug wells of 3(Three) nos in the nearby villages as well as in the core zone. A map showing the sampling locations is depicted in **Figure No: 4.4**. Ground water levels were measured during month of May and August to know the

amount of seasonal fluctuation and availability of ground water during summer season of the area. The details of the sampling locations are described below:

**GW-1 Village Dengula Dug Well**

The water level was measured from the dug well of Dengula village near Panchayat road to know the availability as the villagers are using the dug well water for their drinking purpose.

**GW-2 Village Bandhal Dug Well**

The water level was measured from the dug well of Bandhal village to know the availability as the villagers are using the dug well water for their drinking purpose.

**GW-3 PTA Mines Office Dug Well**

The water level was measured from the dug well of the mines office of M/s Penguin Trading and Agencies Ltd to know the availability during the lean seasons as the water is used for supply to hutting and mines office.

**4.5 Ground Water Quality:**

Ground Water quality was monitored from a net work of existing dug wells/ bore wells/ tube wells in core as well as in buffer zone. Samples were collected during the month of May and August for evaluating the quality of the water and analyzed as per IS 10500.

**GW-1 Mines Office Dug Well**

The water sample was collected from the dug well of the mines office of M/s Penguin Trading and Agencies Ltd and was tested for drinking water quality as the water is used by the officials for their drinking purpose and also supply of drinking water for the workers working in the mines. The water is also supplied in the labour hutting near by the mines office.

**GW-2 Village Dengula Dug Well**

The water sample was collected from the dug well of Dengula village near Panchayat road and was tested for drinking water quality as the villagers are using the dug well water for their drinking purpose.

**GW-3 Village Raikela Bore Well**

The water sample was collected from the bore well of Raikela village and was tested for drinking water quality as the villagers are using the bore well water for their drinking and domestic purpose.

**GW-4 Village Bandhal Dug Well**

The water sample was collected from the dug well of Bandhal village and was tested for drinking water quality as the villagers are using the dug well water for their drinking purpose.

**GW-5 Bore Well Near Bottom Weigh Bridge**

The water sample was collected from the bore well near the bottom weigh bridge and was analysed for drinking water quality as the water is supplied for drinking purpose in the mine for the mine workers.



Figure No: 4.3 SURFACE WATER QUALITY & STREAM FLOW MEASUREMENT LOCATION MAP

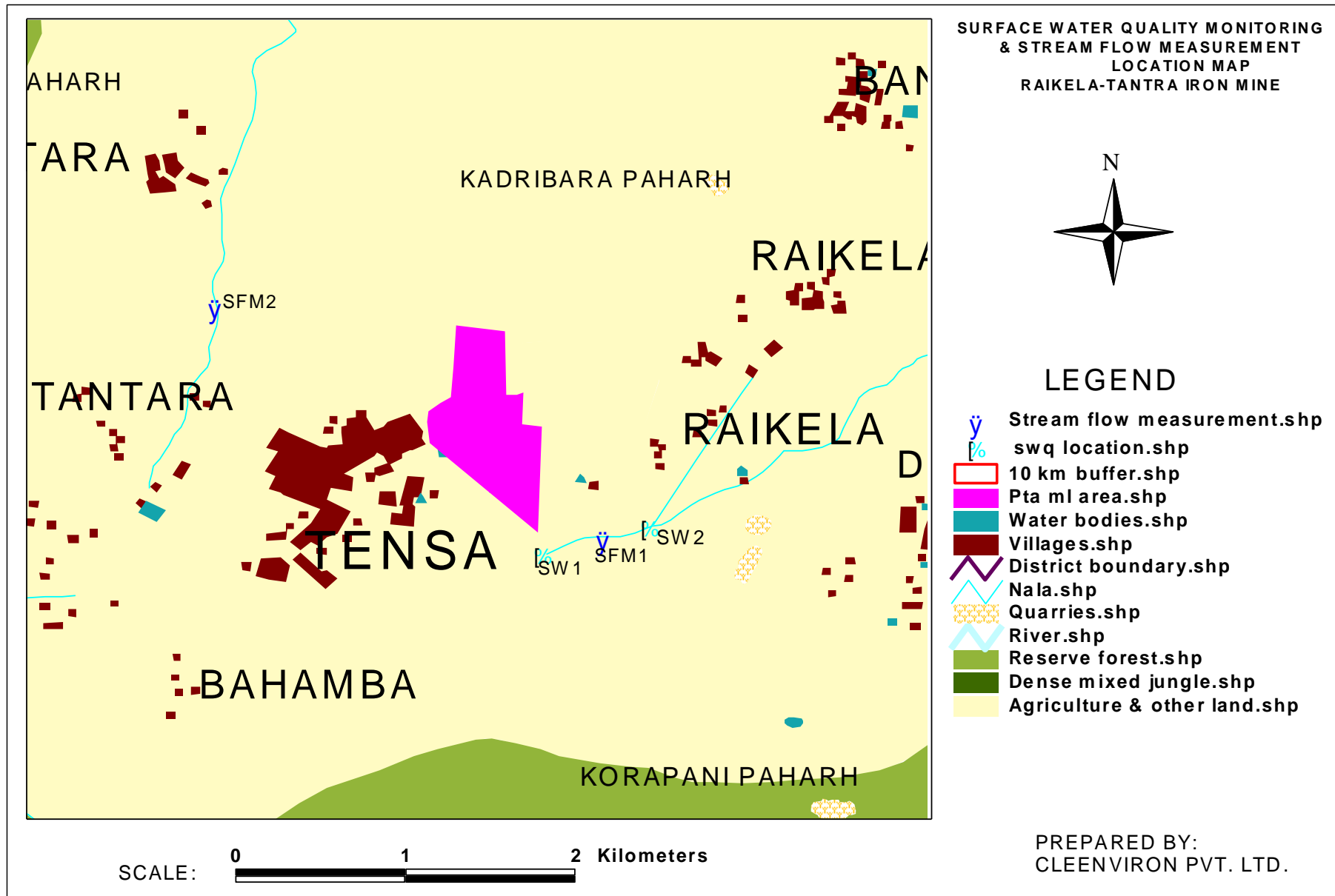
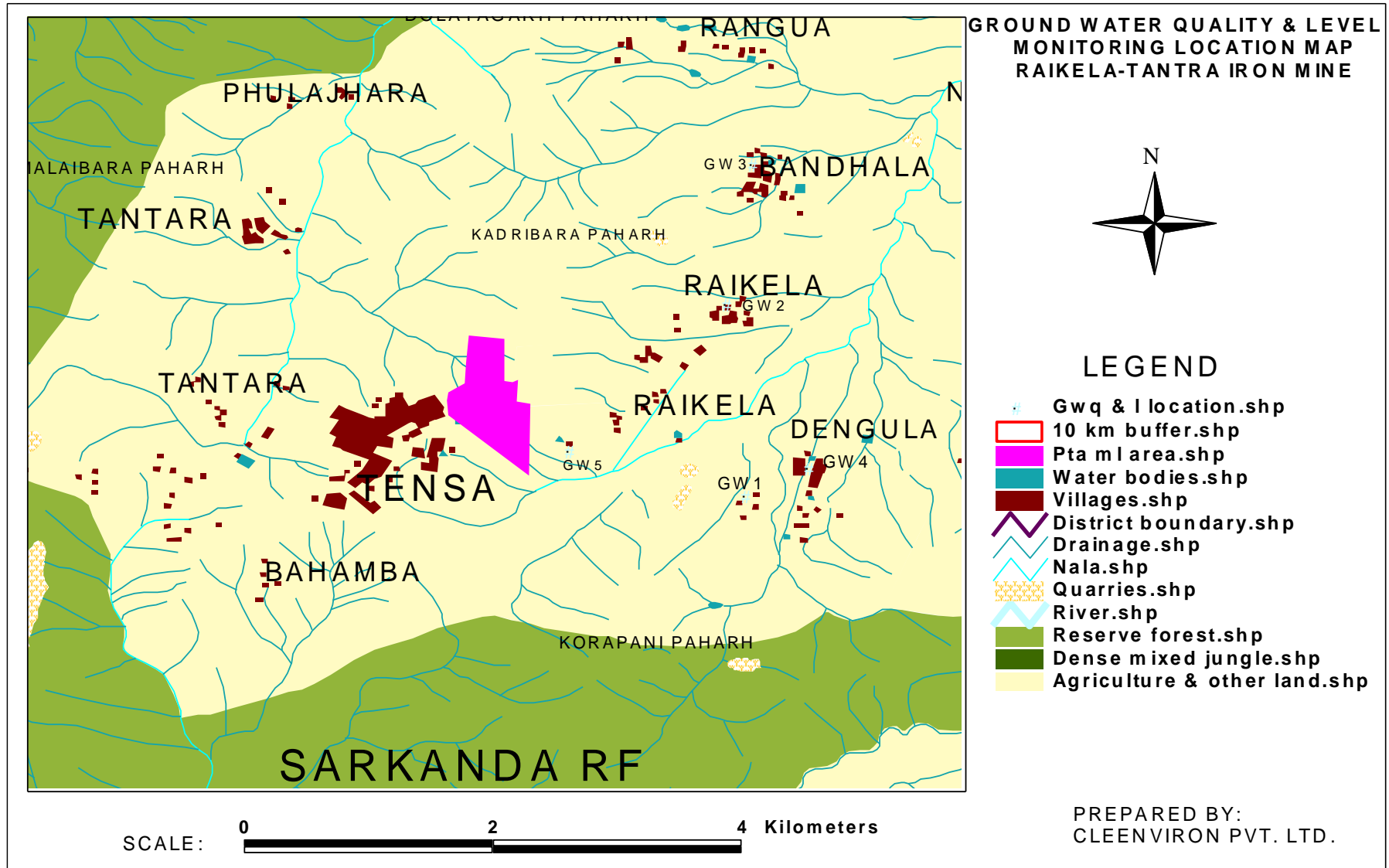


Figure No: 4.4 GROUND WATER LEVEL AND QUALITY MONITORING LOCATION MAP



#### **4.6 Noise Level Monitoring**

Noise levels were measured at total 9(Nine) different locations within the core as well as buffer zone. To assess the impact of the mining operation on the ambient noise level two locations were fixed within the core zone i.e. within the quarry during operation of machineries and second at the mines office area. Four locations were selected at source and the monitoring was carried out to assess the SPL in dB(A) from the HEMM during operation. Three more locations are fixed at three villages within the buffer zone to know the noise level at the receptor locations due to the mining activity. The sampling locations are shown in the **Figure No: 4.5**. A brief description of the monitoring location is given below:

##### **N-1 Drill Machine Operator's Cabin**

This monitoring was carried out to assess the noise level due to the operation of the Drill Machine on the Operator. This monitoring was done as per the DGMS guidelines for occupational safety of the workers. The monitoring was carried out near the Drill Machine at a distance of 2 m.

##### **N-2 Excavator Operator's Cabin**

This monitoring was carried out to assess the noise level due to the operation of the excavator on the Operator. This monitoring was done as per the DGMS guidelines for occupational safety of the workers. The monitoring was carried out within the Operator's Cabin.

##### **N-3 Loader Operator's Cabin**

This monitoring was carried out to assess the noise level due to the operation of the Loader on the Operator. This monitoring was done as per the DGMS guidelines for occupational safety of the workers. The monitoring was carried out within the Operator's Cabin.

##### **N-4 Dumper Operator's Cabin**

This monitoring was carried out to assess the noise level due to the operation of the Dumper on the Operator. This monitoring was done as per the DGMS guidelines for occupational safety of the workers. The monitoring was carried out within the Operator's Cabin.

##### **N-5 Quarry Area during Mining Operation**

This station was selected to assess the ambient noise level due to the operation of HEMM within the quarry area during ongoing mining works. The monitoring was carried out inside the quarry and at distance of 100 m from the operating machines.

##### **N-6 Mines Office area**

This station was selected to assess the ambient noise level due to the mining activity at mines office area. The monitoring was carried out within the mines office premises.

##### **N-7 Village Dengula**

This station was selected to assess the ambient noise level in the buffer zone at the receptor locations and the impact of the mining activity on the village. The monitoring was carried out within the village Dengula.

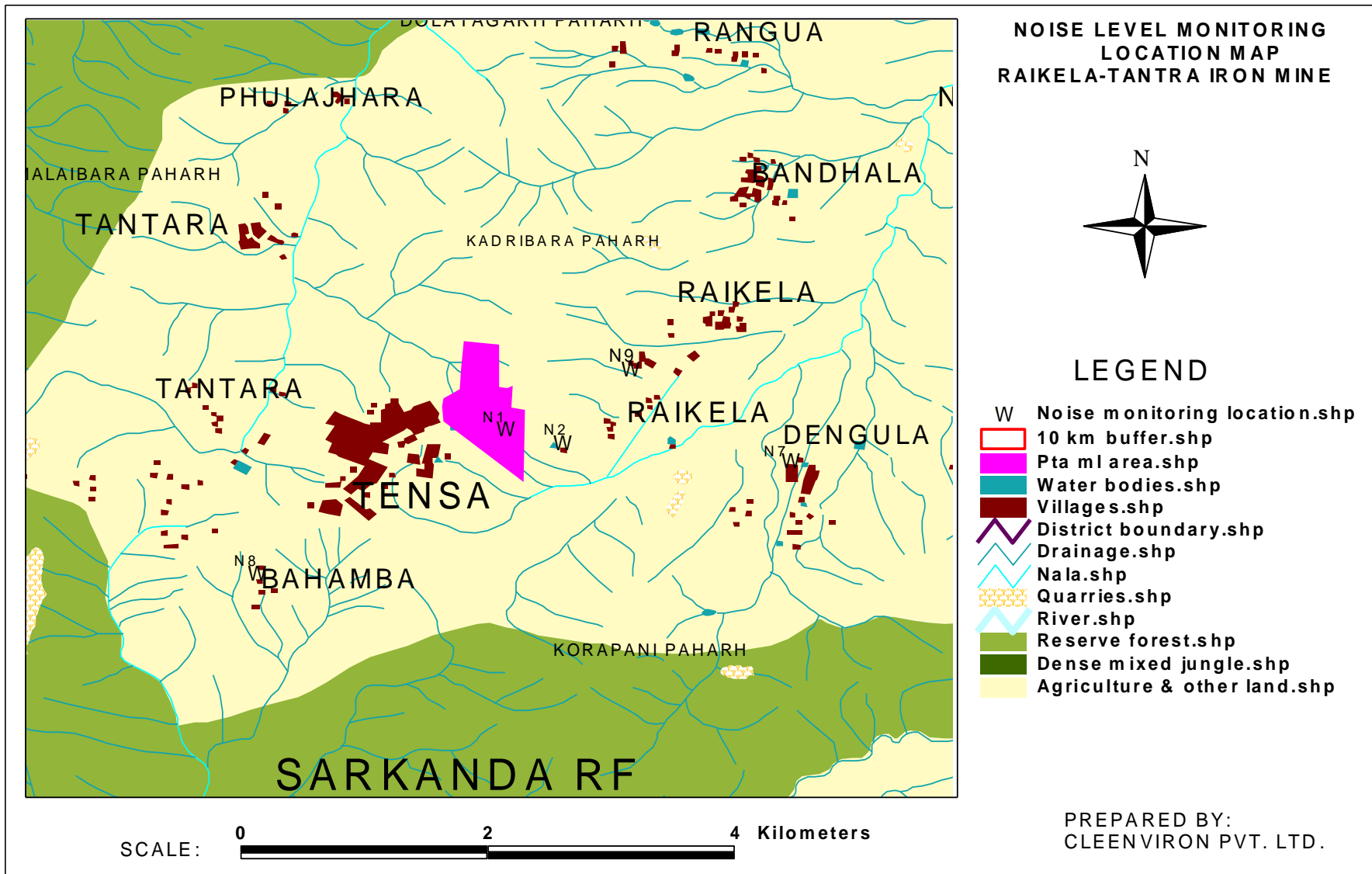
##### **N-8 Village Raikela**

This station was selected to assess the ambient noise level in the buffer zone at the receptor locations and the impact of the mining activity on the village. The monitoring was carried out within the village Raikela.

##### **N-9 Village Bandhal**

This station was selected to assess the ambient noise level in the buffer zone at the receptor locations and the impact of the mining activity on the village. The monitoring was carried out within the village Bandhal.

Figure No: 4.5 NOISE LEVEL & SOIL QUALITY MONITORING LOCATION MAP



#### **4.7 Soil Quality Monitoring**

Soil monitoring is carried out at two different locations, one near the OB dump and other from the agriculture land near the Mines office in the buffer zone. The sampling locations are shown in the **Figure No: 4.5**. A brief description of the monitoring location is given below:

##### **S-1 Land Near the OB Dump**

This location is selected to assess the soil quality due to dumping of Over burden and wastes generated from the mining operation.

##### **S-2 Agriculture Land near the Mines Office**

This location is selected to assess the soil quality in the buffer zone and its effects due to the runoff from the mining lease area to the nearby agriculture land during monsoon.

### **5.0 METHODOLOGY OF SAMPLING & ANALYTICAL PROCEDURES**

#### **5.1 Micro-meteorological Monitoring**

An Automatic Weather Monitoring station is installed in front of the Mine Site office to collect site specific micro-meteorological data, the station is installed at the highest elevation point of the mines with a tripod stand and is fixed permanently. The station is having provision for monitoring of Wind Speed, Wind Direction, Temperature, Relative Humidity and Rainfall. The instrument is having data logging facility at an interval of 1 hour and can store up to 8000 data without interruption as it is operated by Solar Panel and one 12 volt battery for night time operation.

#### **5.2 Ambient Air Monitoring**

Air quality samples were monitored for significant parameters like, PM<sub>2.5</sub>, PM<sub>10</sub>, SO<sub>2</sub>, NO<sub>2</sub> & CO. For sampling and analysis methods prescribed by CPCB were followed and Respirable Dust Samplers (RDS) and Fine Particulate Samplers, Make: Universal Scientific Instruments & Calibration were used at the site. For CO measurements a direct reading instrument having electrochemical sensor based calibrated digital monitor was used at the site and being operated continuously.

24 hours continuous samplings were carried out continuously at all the three locations within core zone. Within buffer zone the monitoring is done once in a month.

All the analytical techniques followed are as per CPCB approved and as per Indian Standard methods.

Sulphur Dioxide sampling and analysis was carried out by following Improved West & Gaeke Method. The detection limit was 3µg/m<sup>3</sup>.

Nitrogen Oxides sampling and analysis was carried out by following modified Jacob & Hochheiser method (Sodium Arsenite Method). The detection limit was 6µg/m<sup>3</sup>.

#### **5.3 Fugitive Dust Emission Monitoring**

Fugitive Dust emission samples were collected for parameter like, PM<sub>10</sub>. For sampling and analysis, methods prescribed by CPCB were followed and Respirable Dust Samplers Model: AQS 136, Make: Universal Scientific Instruments & Calibration, were used at the site.

#### 5.4 Water Quality Sampling

As per the standard practice, one sample from each station was collected once, during the month of May and August. Grab water samples were collected in plastic container by standard sampling technique. Necessary precautions were taken for sample preservation. The parameters like pH, Temp and Conductivity were measured at the site by using portable water analysis kit from WTW, Germany. All other parameters were analysed as per the standard methods for Water and Waste Water analysis by APHA 23<sup>rd</sup> edition.

#### 5.5 Noise Level Monitoring

Ambient Noise level monitoring was carried out with an integrating Sound Level Meter, Model: SLM 100, Make: Envirotech Instruments Pvt. Ltd. in dB(A) and Model: SL 4001, Make: Lutron. The measurements were collected at a height of 1.5m from the ground level and away from any sound reflecting sources like walls and buildings etc.

The Ambient Noise monitoring was carried out on continuous basis by the data logging system of the instrument and data are logged on at every minute for 24 hours. The Sound Pressure Level was measured and Lmin, Lmax & Leq were calculated and interpreted for data analysis.

#### 5.6 Soil Quality Monitoring

Soil monitoring was carried out by collecting soil samples from the two different sites as per the Methods Manual for Soil Testing by Department of Agriculture & Cooperation, Ministry of Agriculture, Govt. of India.

### 6.0 DATA ANALYSIS

#### 6.1 Micro-meteorological Data

##### 6.1.1 Wind Speed & Wind Direction

During the entire period from 1<sup>st</sup> April to 30<sup>th</sup> September all total 4392 no. of data are recorded by the instrument and after interpretation of the collected data it was found that Calm condition prevailed over 4.23%, while considering the 24 hourly data. 0.43% calm condition prevailed from morning 6 hrs to 14hrs for the entire study period, 3.89% calm condition prevailed from 14hrs to 22hrs and 8.32% calm condition prevailed from 22hrs to 06hrs. The predominant wind directions were from South with average wind speed 4.71 m/sec. The wind rose diagrams for the entire study period are depicted on the **Figure No: 6.1, 6.2, 6.3 & 6.4.**

##### 6.1.2 Temperature

The maximum & minimum temperature during the entire study period was divided in to two parts as the study period was covering summer as well as monsoon seasons. The Minimum temperature during the summer season was found to be 18.67°C and the Maximum temperature was found to be 38.22°C up to the end of 30<sup>th</sup> June. The minimum and maximum relative humidity during the summer season is found to be 10.53% and 99.37%.

The minimum and maximum temperature during the monsoon season i.e. from July to September was found to be 20.47°C and 30.18°C. The minimum and maximum relative humidity during the monsoon season is found to be 65.83% and 99.99%. **Table No 6.1** shows a summary of micro-meteorological data collected for the entire period.

##### 6.1.3 Rainfall

The total rain fall from 1<sup>st</sup> April to 30<sup>th</sup> September was observed to be 1201.0 mm. during the study period. A month wise rainfall data recorded at the site is depicted in **Table No 6.1.**



Figure No: 6.2

Wind Rose Diagram & Wind Class Distribution from 6 – 14 Hours

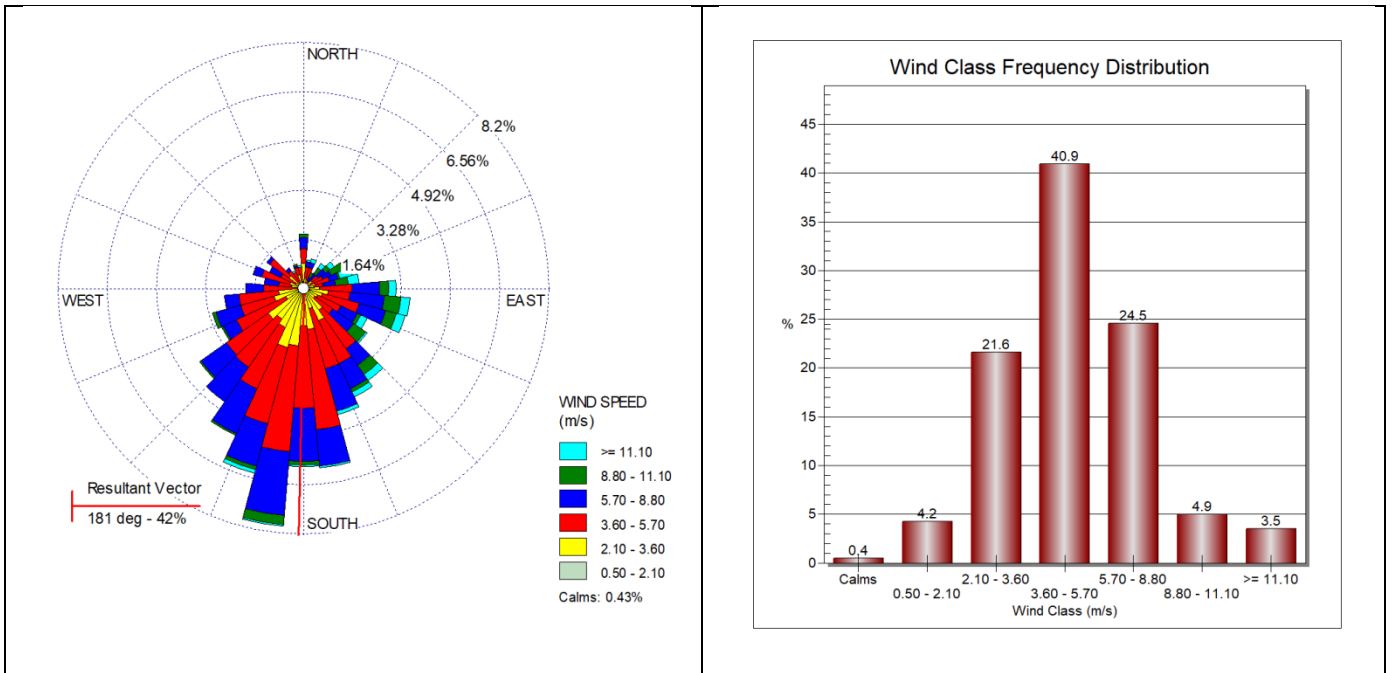


Figure No: 6.3

Wind Rose Diagram & Wind Class Distribution from 14 – 22 Hours

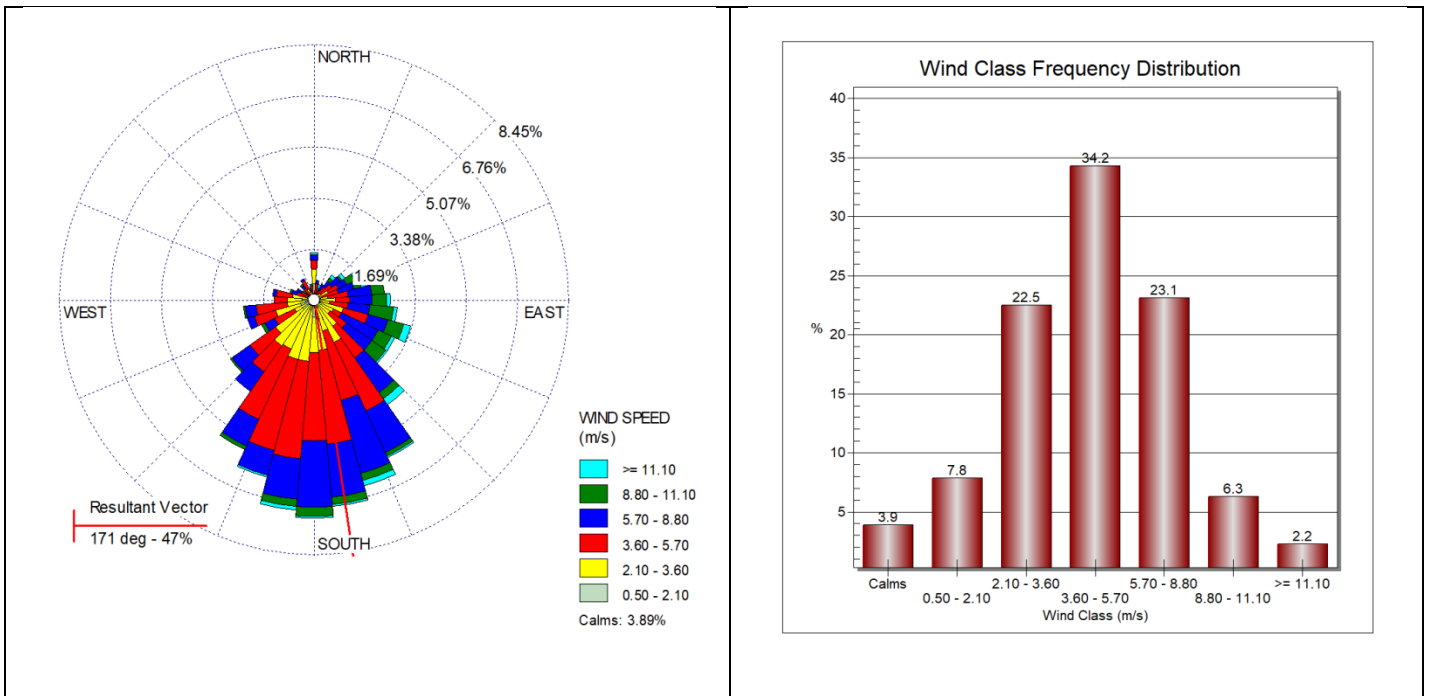
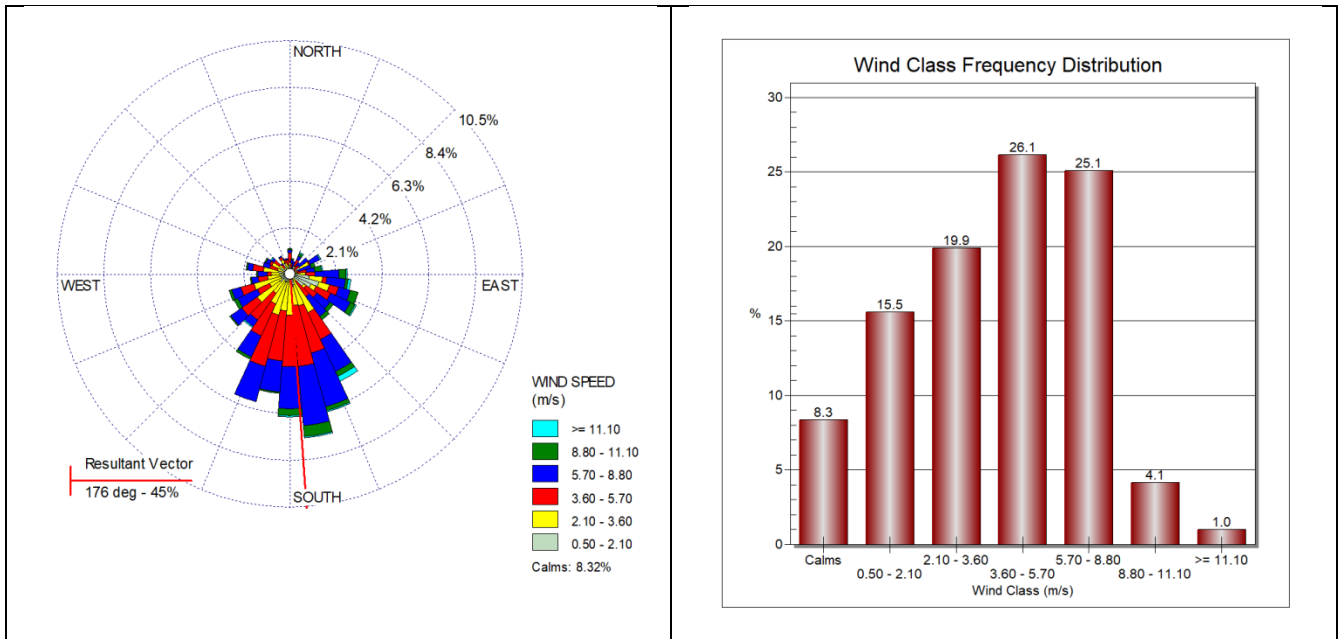




Figure No: 6.4

Wind Rose Diagram & Wind Class Distribution from 22 – 06 Hours



## 6.2 Ambient Air Quality Data

### 6.2.1 Near Mines Site Office (A-1) [Core Zone]

#### PM2.5

Data as given in the **Table No: 6.2** shows that the maximum value was  $26.47\mu\text{g}/\text{m}^3$ , the lowest value was  $14.4\mu\text{g}/\text{m}^3$  and the average value was  $20.4\mu\text{g}/\text{m}^3$ .

All the readings are below the permissible limit of  $60\mu\text{g}/\text{m}^3$  as specified in the National Ambient Air Quality Standards, CPCB Notification 18<sup>th</sup> November 2009.

#### PM10

The data given in the **Table No: 6.2** shows the maximum value was  $82.12\mu\text{g}/\text{m}^3$ , the lowest value was  $44.71\mu\text{g}/\text{m}^3$  and the average value was  $62.5\mu\text{g}/\text{m}^3$ .

All the readings are below the permissible limit of  $100\mu\text{g}/\text{m}^3$  as specified in the National Ambient Air Quality Standards, CPCB Notification 18<sup>th</sup> November 2009.

#### SO<sub>2</sub>

The data given in the **Table No: 6.2** shows the maximum value was  $6.84\mu\text{g}/\text{m}^3$ , the lowest value was  $4.64\mu\text{g}/\text{m}^3$  and the average value was  $5.80\mu\text{g}/\text{m}^3$ .

#### NO<sub>2</sub>

The data given in the **Table No: 6.2** shows the maximum value was  $22.56\mu\text{g}/\text{m}^3$ , the lowest value was  $16.45\mu\text{g}/\text{m}^3$  and the average value was  $20.0\mu\text{g}/\text{m}^3$ .

All the readings are below the permissible limit of  $80\mu\text{g}/\text{m}^3$  as specified in the National Ambient Air Quality Standards, CPCB Notification 18<sup>th</sup> November 2009.

## CO

All the CO readings are found to be below the detection limit of 114.4µg/m<sup>3</sup>

**Table No: 6.2**

<b>Monthly Average</b>	<b>PM2.5</b>	<b>PM10</b>	<b>SO<sub>2</sub></b>	<b>NO<sub>2</sub></b>
April	26.47	82.12	4.83	17.48
May	22.97	70.21	5.42	18.74
June	24.90	75.12	5.83	19.38
July	14.40	44.71	5.79	21.69
August	17.03	54.20	6.22	23.25
September	16.42	48.54	6.73	21.52
<b>Minimum</b>	<b>14.4</b>	<b>44.71</b>	<b>4.83</b>	<b>17.48</b>
<b>Maximum</b>	<b>26.47</b>	<b>82.12</b>	<b>6.73</b>	<b>23.25</b>
<b>Average</b>	<b>20.4</b>	<b>62.5</b>	<b>5.8</b>	<b>20.3</b>
<b>98% tile</b>	<b>14.6</b>	<b>45.1</b>	<b>4.9</b>	<b>17.6</b>

### 6.2.2 Tantra Section Near Lease Boundary (A-2) [Core Zone]

#### PM2.5

Data as given in the **Table No: 6.3** shows that the maximum value was 27.03µg/m<sup>3</sup>, the lowest value was 16.2µg/m<sup>3</sup> and the average value was 22.1µg/m<sup>3</sup>.

All the readings are below the permissible limit of 60µg/m<sup>3</sup> as specified in the National Ambient Air Quality Standards, CPCB Notification 18<sup>th</sup> November 2009.

#### PM10

The data given in the **Table No: 6.3** shows the maximum value was 82.17µg/m<sup>3</sup>, the lowest value was 52.28µg/m<sup>3</sup> and the average value was 67.5µg/m<sup>3</sup>.

All the readings are below the permissible limit of 100µg/m<sup>3</sup> as specified in the National Ambient Air Quality Standards, CPCB Notification 18<sup>th</sup> November 2009.

#### SO<sub>2</sub>

The data given in the **Table No: 6.3** shows the maximum value was 6.84µg/m<sup>3</sup>, the lowest value was 4.64µg/m<sup>3</sup> and the average value was 5.80µg/m<sup>3</sup>.

#### NO<sub>2</sub>

The data given in the **Table No: 6.3** shows the maximum value was 22.56µg/m<sup>3</sup>, the lowest value was 16.45µg/m<sup>3</sup> and the average value was 20.0µg/m<sup>3</sup>.

All the readings are below the permissible limit of 80µg/m<sup>3</sup> as specified in the National Ambient Air Quality Standards, CPCB Notification 18<sup>th</sup> November 2009.

## CO

All the CO readings are found to be below the detection limit of 114.4µg/m<sup>3</sup>

**Table No: 6.3**

<b>Monthly Average</b>	<b>PM2.5</b>	<b>PM10</b>	<b>SO<sub>2</sub></b>	<b>NO<sub>2</sub></b>
April	26.37	82.17	4.64	16.45
May	25.61	80.10	5.32	19.50
June	27.03	81.37	6.30	19.80
July	18.19	52.63	5.71	20.40
August	16.20	52.28	6.15	22.56
September	19.03	56.72	6.84	21.05
<b>Minimum</b>	<b>16.2</b>	<b>52.28</b>	<b>4.64</b>	<b>16.45</b>
<b>Maximum</b>	<b>27.03</b>	<b>82.17</b>	<b>6.84</b>	<b>22.56</b>
<b>Average</b>	<b>22.1</b>	<b>67.5</b>	<b>5.8</b>	<b>20.0</b>
<b>98% tile</b>	<b>16.4</b>	<b>52.3</b>	<b>4.7</b>	<b>16.8</b>

### **6.2.3 Near Main Entry Gate of Mines (A-3) [Core Zone]**

#### **PM2.5**

Data as given in the **Table No: 6.4** shows that the maximum value was 32.12µg/m<sup>3</sup>, the lowest value was 18.79µg/m<sup>3</sup> and the average value was 24.8µg/m<sup>3</sup>.

All the readings are below the permissible limit of 60µg/m<sup>3</sup> as specified in the National Ambient Air Quality Standards, CPCB Notification 18<sup>th</sup> November 2009.

#### **PM10**

The data given in the **Table No: 6.4** shows the maximum value was 88.63µg/m<sup>3</sup>, the lowest value was 55.3µg/m<sup>3</sup> and the average value was 73.4µg/m<sup>3</sup>.

All the readings are below the permissible limit of 100µg/m<sup>3</sup> as specified in the National Ambient Air Quality Standards, CPCB Notification 18<sup>th</sup> November 2009.

#### **SO<sub>2</sub>**

The data given in the **Table No: 6.4** shows the maximum value was 7.29µg/m<sup>3</sup>, the lowest value was 4.68µg/m<sup>3</sup> and the average value was 6.1µg/m<sup>3</sup>.

#### **NO<sub>2</sub>**

The data given in the **Table No: 6.4** shows the maximum value was 25.15µg/m<sup>3</sup>, the lowest value was 16.75µg/m<sup>3</sup> and the average value was 21.2µg/m<sup>3</sup>.

All the readings are below the permissible limit of 80µg/m<sup>3</sup> as specified in the National Ambient Air Quality Standards, CPCB Notification 18<sup>th</sup> November 2009.

#### **CO**

All the CO readings are found to be below the detection limit of 114.4µg/m<sup>3</sup>

**Table No: 6.4**

<b>Monthly Average</b>	<b>PM2.5</b>	<b>PM10</b>	<b>SO<sub>2</sub></b>	<b>NO<sub>2</sub></b>
April	28.27	88.58	4.68	16.75
May	30.48	88.63	5.85	20.02
June	32.12	88.50	5.60	19.22
July	20.21	58.94	6.47	23.37
August	18.92	60.15	6.45	25.15
September	18.79	55.30	7.29	22.84
<b>Minimum</b>	<b>18.79</b>	<b>55.3</b>	<b>4.68</b>	<b>16.75</b>
<b>Maximum</b>	<b>32.12</b>	<b>88.63</b>	<b>7.29</b>	<b>25.15</b>
<b>Average</b>	<b>24.8</b>	<b>73.4</b>	<b>6.1</b>	<b>21.2</b>
<b>98% tile</b>	<b>18.8</b>	<b>55.7</b>	<b>4.8</b>	<b>17.0</b>

#### **6.2.4 Mines Office Area (A-4) [Buffer Zone]**

##### **PM2.5**

Data as given in the **Table No: 6.5** shows that the maximum value was 30µg/m<sup>3</sup>, the lowest value was 10µg/m<sup>3</sup> and the average value was 22.3µg/m<sup>3</sup>.

All the readings are below the permissible limit of 60µg/m<sup>3</sup> as specified in the National Ambient Air Quality Standards, CPCB Notification 18<sup>th</sup> November 2009.

##### **PM10**

The data given in the **Table No: 6.5** shows the maximum value was 88µg/m<sup>3</sup>, the lowest value was 34µg/m<sup>3</sup> and the average value was 66.7µg/m<sup>3</sup>.

All the readings are below the permissible limit of 100µg/m<sup>3</sup> as specified in the National Ambient Air Quality Standards, CPCB Notification 18<sup>th</sup> November 2009.

##### **SO<sub>2</sub>**

The data given in the **Table No: 6.5** shows the maximum value was 10.0µg/m<sup>3</sup>, the lowest value was 5.0µg/m<sup>3</sup> and the average value was 6.7µg/m<sup>3</sup>.

##### **NO<sub>2</sub>**

The data given in the **Table No: 6.5** shows the maximum value was 35µg/m<sup>3</sup>, the lowest value was 21µg/m<sup>3</sup> and the average value was 25.7µg/m<sup>3</sup>.

All the readings are below the permissible limit of 80µg/m<sup>3</sup> as specified in the National Ambient Air Quality Standards, CPCB Notification 18<sup>th</sup> November 2009.

##### **CO**

All the CO readings are found to be below the detection limit of 114.4µg/m<sup>3</sup>

**Table No: 6.5**

<b>Months</b>	<b>PM2.5</b>	<b>PM10</b>	<b>SO<sub>2</sub></b>	<b>NO<sub>2</sub></b>
April	30	88	5	21
May	28	77	6	24
June	19	55	7	21
July	23	74	6	28
August	24	72	10	35
September	10	34	6	25
<b>Minimum</b>	<b>10</b>	<b>34</b>	<b>5</b>	<b>21</b>
<b>Maximum</b>	<b>30</b>	<b>88</b>	<b>10</b>	<b>35</b>
<b>Average</b>	<b>22.3</b>	<b>66.7</b>	<b>6.7</b>	<b>25.7</b>
<b>98% tile</b>	<b>10.9</b>	<b>36.1</b>	<b>5.1</b>	<b>21.0</b>

### **6.2.5 Village Dengula (A-5) [Buffer Zone]**

#### **PM2.5**

Data as given in the **Table No: 6.6** shows that the maximum value was 36 $\mu\text{g}/\text{m}^3$ , the lowest value was 12 $\mu\text{g}/\text{m}^3$  and the average value was 25.2 $\mu\text{g}/\text{m}^3$ .

All the readings are below the permissible limit of 60 $\mu\text{g}/\text{m}^3$  as specified in the National Ambient Air Quality Standards, CPCB Notification 18<sup>th</sup> November 2009.

#### **PM10**

The data given in the **Table No: 6.6** shows the maximum value was 90 $\mu\text{g}/\text{m}^3$ , the lowest value was 34 $\mu\text{g}/\text{m}^3$  and the average value was 68.7 $\mu\text{g}/\text{m}^3$ .

All the readings are below the permissible limit of 100 $\mu\text{g}/\text{m}^3$  as specified in the National Ambient Air Quality Standards, CPCB Notification 18<sup>th</sup> November 2009.

#### **SO<sub>2</sub>**

The data given in the **Table No: 6.6** shows the maximum value was 10.0 $\mu\text{g}/\text{m}^3$ , the lowest value was 5.0 $\mu\text{g}/\text{m}^3$  and the average value was 7.3 $\mu\text{g}/\text{m}^3$ .

#### **NO<sub>2</sub>**

The data given in the **Table No: 6.6** shows the maximum value was 31 $\mu\text{g}/\text{m}^3$ , the lowest value was 19 $\mu\text{g}/\text{m}^3$  and the average value was 24.2 $\mu\text{g}/\text{m}^3$ .

All the readings are below the permissible limit of 80 $\mu\text{g}/\text{m}^3$  as specified in the National Ambient Air Quality Standards, CPCB Notification 18<sup>th</sup> November 2009.

#### **CO**

All the CO readings are found to be below the detection limit of 114.4 $\mu\text{g}/\text{m}^3$

**Table No: 6.6**

<b>Months</b>	<b>PM2.5</b>	<b>PM10</b>	<b>SO<sub>2</sub></b>	<b>NO<sub>2</sub></b>
April	36	90	6	23
May	32	83	9	28
June	25	78	5	19
July	12	34	5	19
August	16	50	10	31
September	30	77	9	25
<b>Minimum</b>	<b>12</b>	<b>34</b>	<b>5</b>	<b>19</b>
<b>Maximum</b>	<b>36</b>	<b>90</b>	<b>10</b>	<b>31</b>
<b>Average</b>	<b>25.2</b>	<b>68.7</b>	<b>7.3</b>	<b>24.2</b>
<b>98% tile</b>	<b>12.4</b>	<b>35.6</b>	<b>5.0</b>	<b>19.0</b>

### **6.2.6 Tensa Town (A-6) [Buffer Zone]**

#### **PM2.5**

Data as given in the **Table No: 6.7** shows that the maximum value was 30 $\mu\text{g}/\text{m}^3$ , the lowest value was 14 $\mu\text{g}/\text{m}^3$  and the average value was 22.5 $\mu\text{g}/\text{m}^3$ .

All the readings are below the permissible limit of 60 $\mu\text{g}/\text{m}^3$  as specified in the National Ambient Air Quality Standards, CPCB Notification 18<sup>th</sup> November 2009.

#### **PM10**

The data given in the **Table No: 6.7** shows the maximum value was 79 $\mu\text{g}/\text{m}^3$ , the lowest value was 35 $\mu\text{g}/\text{m}^3$  and the average value was 60.5 $\mu\text{g}/\text{m}^3$ .

All the readings are below the permissible limit of 100 $\mu\text{g}/\text{m}^3$  as specified in the National Ambient Air Quality Standards, CPCB Notification 18<sup>th</sup> November 2009.

#### **SO<sub>2</sub>**

The data given in the **Table No: 6.7** shows the maximum value was 8.0 $\mu\text{g}/\text{m}^3$ , the lowest value was 3.0 $\mu\text{g}/\text{m}^3$  and the average value was 5.0 $\mu\text{g}/\text{m}^3$ .

#### **NO<sub>2</sub>**

The data given in the **Table No: 6.7** shows the maximum value was 27.0 $\mu\text{g}/\text{m}^3$ , the lowest value was 13.0 $\mu\text{g}/\text{m}^3$  and the average value was 21.7 $\mu\text{g}/\text{m}^3$ .

All the readings are below the permissible limit of 80 $\mu\text{g}/\text{m}^3$  as specified in the National Ambient Air Quality Standards, CPCB Notification 18<sup>th</sup> November 2009.

#### **CO**

All the CO readings are found to be below the detection limit of 114.4 $\mu\text{g}/\text{m}^3$

**Table No: 6.7**

Months	PM2.5	PM10	SO <sub>2</sub>	NO <sub>2</sub>
April	27	72	6	24
May	30	79	8	26
June	30	71	4	22
July	14	35	3	13
August	18	59	4	27
September	16	47	5	18
<b>Minimum</b>	<b>14</b>	<b>35</b>	<b>3</b>	<b>13</b>
<b>Maximum</b>	<b>30</b>	<b>79</b>	<b>8</b>	<b>27</b>
<b>Average</b>	<b>22.5</b>	<b>60.5</b>	<b>5.0</b>	<b>21.7</b>
<b>98% tile</b>	<b>14.2</b>	<b>36.2</b>	<b>3.1</b>	<b>13.5</b>

**6.2.7 Village Bahamba (A-7) [Buffer Zone]****PM2.5**

Data as given in the **Table No: 6.8** shows that the maximum value was 26 $\mu\text{g}/\text{m}^3$ , the lowest value was 13 $\mu\text{g}/\text{m}^3$  and the average value was 20.5 $\mu\text{g}/\text{m}^3$ .

All the readings are below the permissible limit of 60 $\mu\text{g}/\text{m}^3$  as specified in the National Ambient Air Quality Standards, CPCB Notification 18<sup>th</sup> November 2009.

**PM10**

The data given in the **Table No: 6.8** shows the maximum value was 75 $\mu\text{g}/\text{m}^3$ , the lowest value was 42 $\mu\text{g}/\text{m}^3$  and the average value was 57.0 $\mu\text{g}/\text{m}^3$ .

All the readings are below the permissible limit of 100 $\mu\text{g}/\text{m}^3$  as specified in the National Ambient Air Quality Standards, CPCB Notification 18<sup>th</sup> November 2009.

**SO<sub>2</sub>**

The data given in the **Table No: 6.8** shows the maximum value was 7.0 $\mu\text{g}/\text{m}^3$ , the lowest value was 4.0 $\mu\text{g}/\text{m}^3$  and the average value was 5.7 $\mu\text{g}/\text{m}^3$ .

**NO<sub>2</sub>**

The data given in the **Table No: 6.8** shows the maximum value was 38.0 $\mu\text{g}/\text{m}^3$ , the lowest value was 16.0 $\mu\text{g}/\text{m}^3$  and the average value was 24.8 $\mu\text{g}/\text{m}^3$ .

All the readings are below the permissible limit of 80 $\mu\text{g}/\text{m}^3$  as specified in the National Ambient Air Quality Standards, CPCB Notification 18<sup>th</sup> November 2009.

**CO**

All the CO readings are found to be below the detection limit of 114.4 $\mu\text{g}/\text{m}^3$

Table No: 6.8

Months	PM2.5	PM10	SO <sub>2</sub>	NO <sub>2</sub>
April	22	53	4	16
May	21	54	5	18
June	24	60	7	23
July	13	42	6	34
August	17	58	5	20
September	26	75	7	38
<b>Minimum</b>	<b>13</b>	<b>42</b>	<b>4</b>	<b>16</b>
<b>Maximum</b>	<b>26</b>	<b>75</b>	<b>7</b>	<b>38</b>
<b>Average</b>	<b>20.5</b>	<b>57.0</b>	<b>5.7</b>	<b>24.8</b>
<b>98% tile</b>	<b>13.4</b>	<b>43.1</b>	<b>4.1</b>	<b>16.2</b>

Figure No: 6.5 Graphical Representations of PM2.5 Values in Core & Buffer Zone

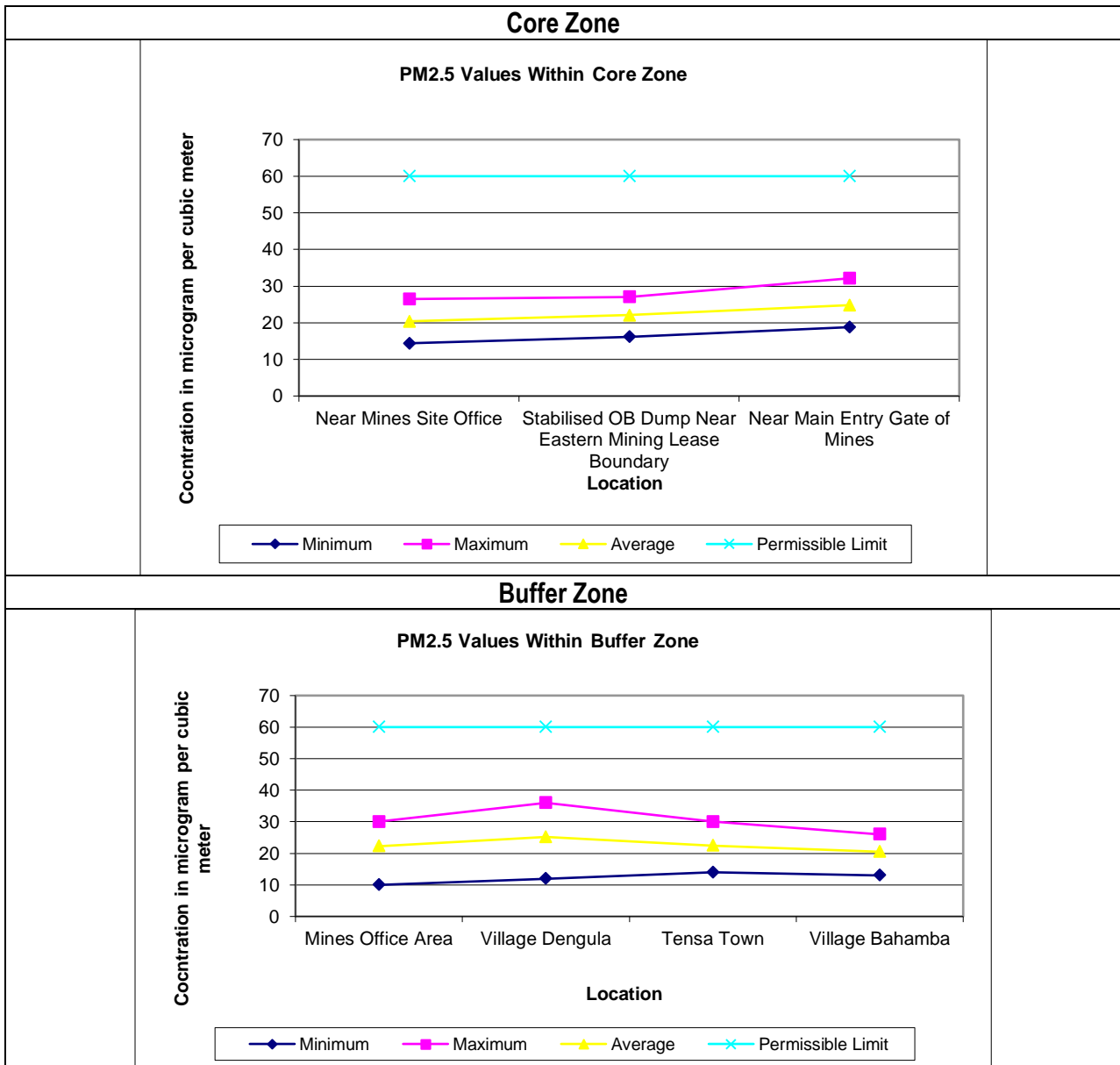




Figure No: 6.6 Graphical Representations of PM10 Values in Core & Buffer Zone

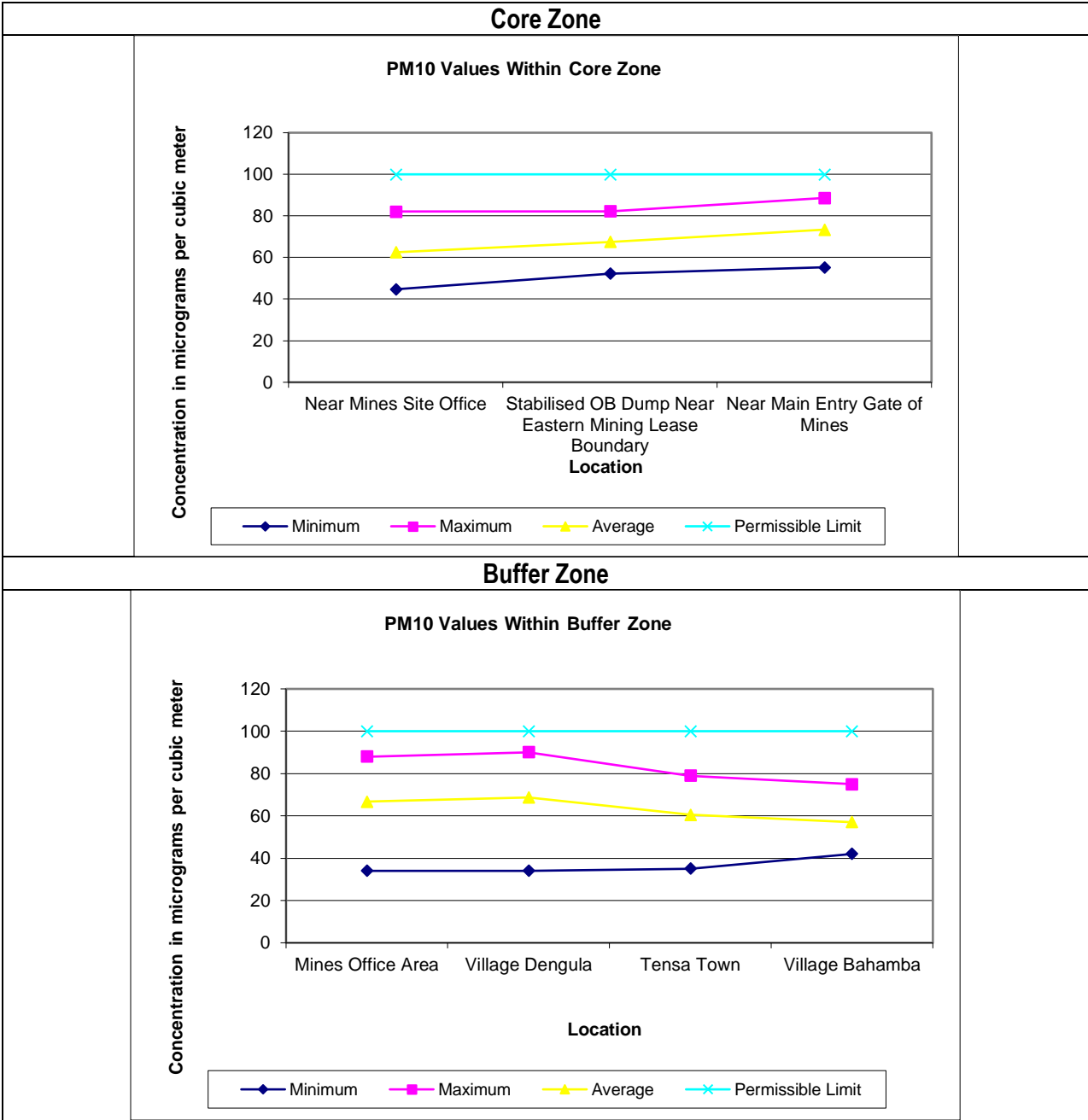


Figure No: 6.7 Graphical Representations of SO<sub>2</sub> Values in Core & Buffer Zone

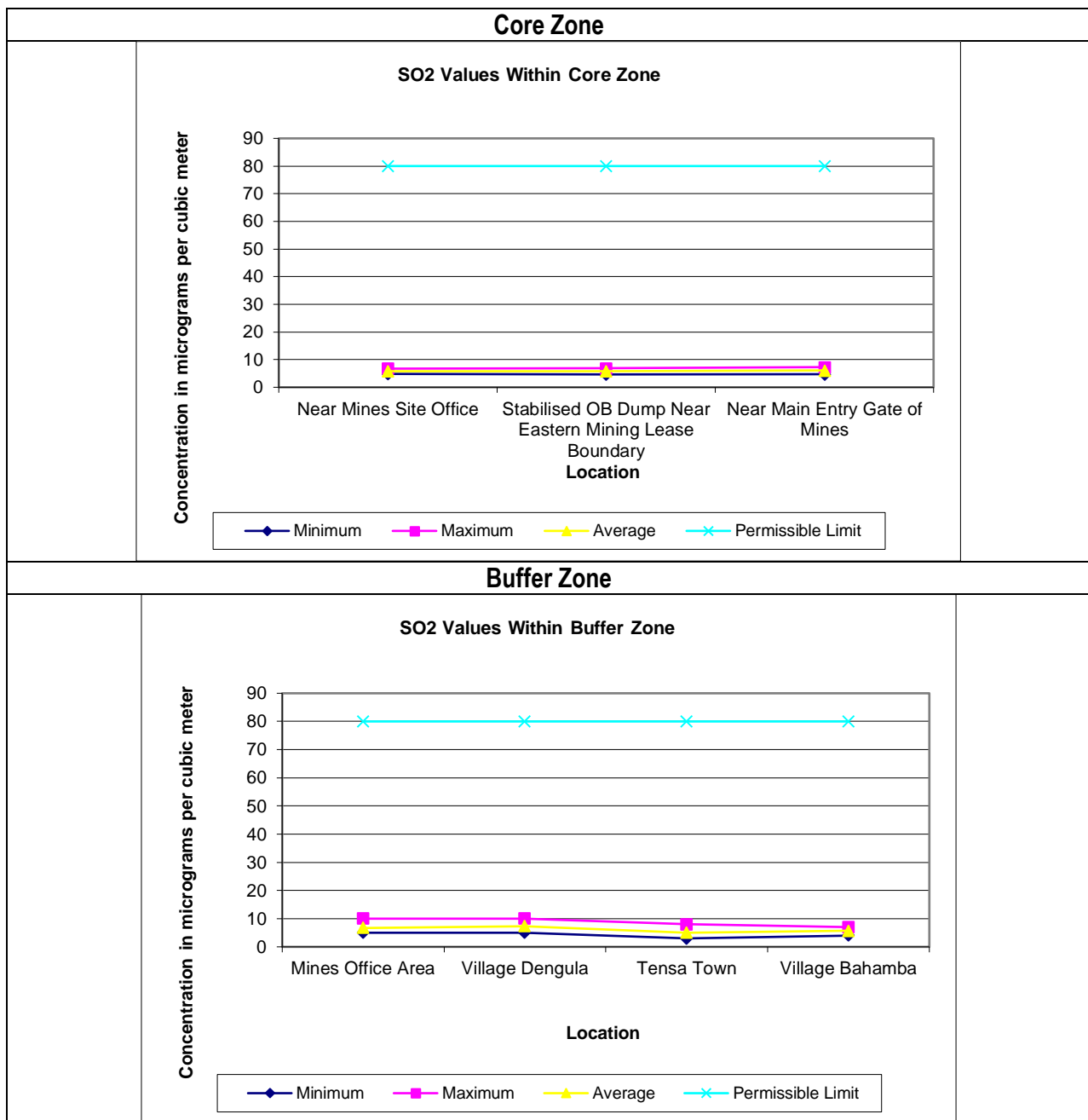
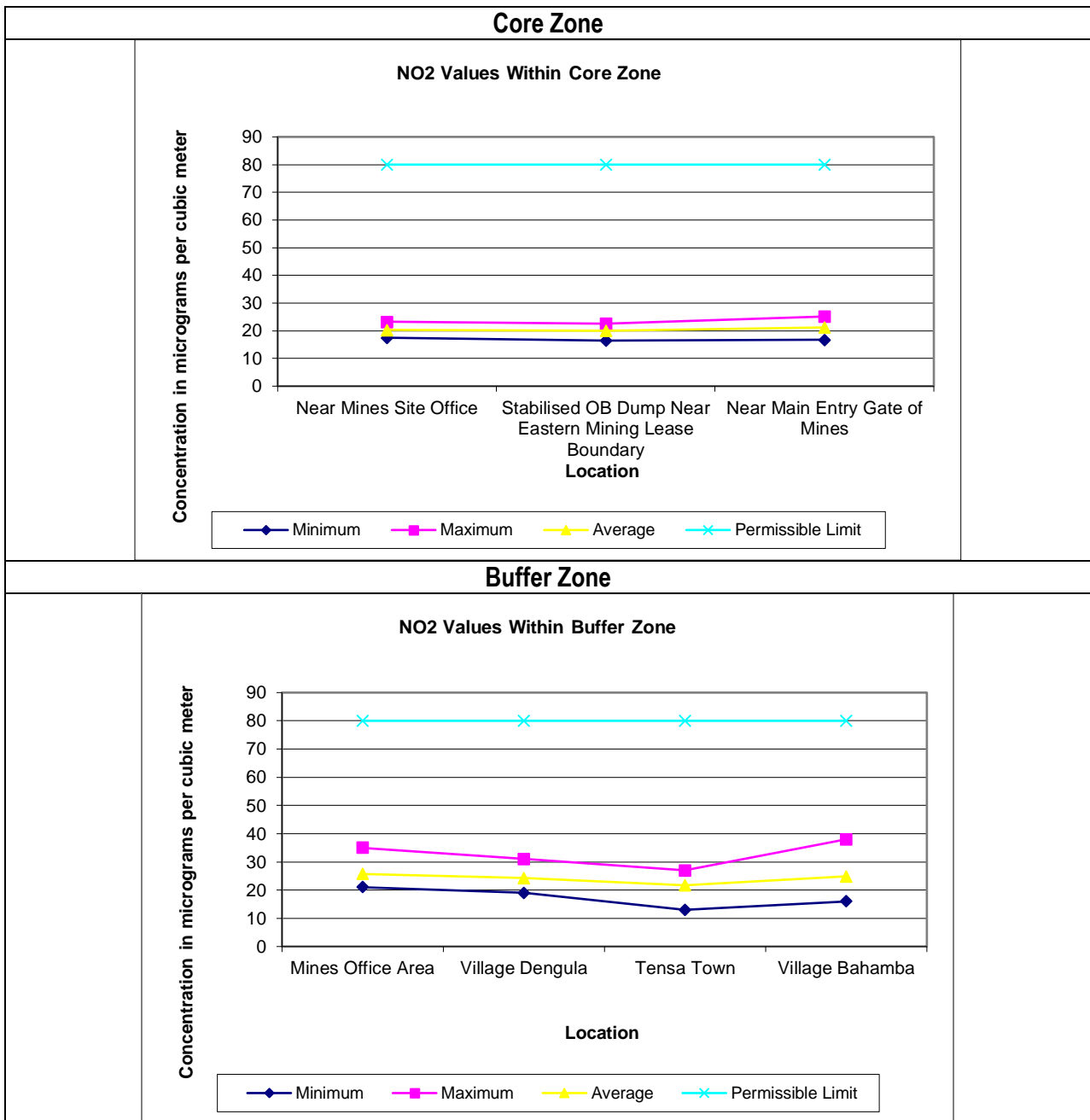


Figure No: 6.8 Graphical Representations of NO<sub>2</sub> Values in Core & Buffer Zone



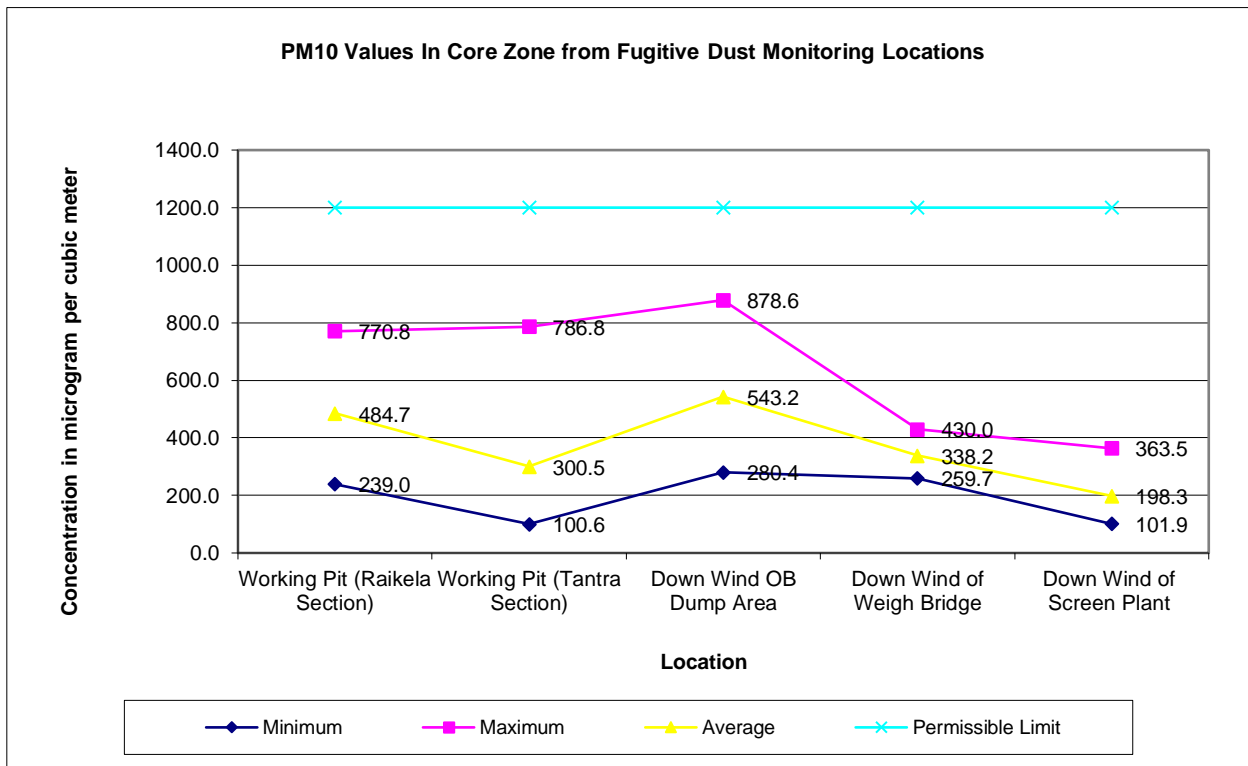
## 5.1 Fugitive Dust Emission Data

The fugitive dust samples collected from five locations during April to September months is detailed below.

**Table 6.9 Fugitive Dust Emission Monitoring Data**

Months	Working Pit Raikela Section	Working Pit Tantra Section	Down Wind OB Dump	Down Wind Weigh Bridge	Down Wind Screen/Crusher Plant
April	715.1	786.8	769.5	374.1	232.0
May	770.8	-	878.6	430.0	363.5
June	640.9	318.6	702.4	368.8	220.4
July	264.3	168.7	334.5	268.5	132.7
August	277.9	127.8	280.4	259.7	101.9
September	239.0	100.6	293.6	328.0	139.0
Minimum	239	100.6	280.4	259.7	101.9
Maximum	770.8	786.8	878.6	430	363.5
Average	484.67	300.50	543.17	338.18	198.25
98%tile Value	241.53	102.776	281.72	260.58	104.98

**Figure No: 6.9 Graphical Representations of PM10 Values**



## 5.2 Water Quality

### SW-1 Karo River Water Before ML area:

The sample after analysis and in comparison with the Standards prescribed in the Surface Water Quality Standard, IS 2296 (Class – C), water used for Drinking with conventional treatment followed by Disinfection is found to be well within the prescribed limits in both the seasons monitored except for the pH of the water is slightly acidic. The results are detailed in **Table No. 6.10**.

**Table No: 6.10**  
**Karo River Water (100 m upstream of the ML area)**

Sl No	Parameters	Six Monthly Average Value	Surface Water Quality Standard as per IS: 2296 (Class C)
1.	pH Value	5.75	6.5 – 8.5
2.	Electrical Conductivity	41.87	-
3.	Total Dissolved Solids	26.17	1500
4.	Total Hardness (as CaCO <sub>3</sub> )	19.51	-
5.	Chlorides (as Cl)	5.14	600
6.	Sulfate (as SO <sub>4</sub> )	3.91	400
7.	Total Nitrate (as NO <sub>3</sub> )	< 2.20	50
8.	Fluoride (as F)	< 0.05	1.5
9.	Calcium (as Ca)	4.58	-
10.	Magnesium (as Mg)	2.16	-
11.	Copper (as Cu)	< 0.10	1.5
12.	Iron (as Fe)	0.61	50
13.	Manganese (as Mn)	< 0.05	-
14.	Zinc (as Zn)	< 0.02	15
15.	Total Arsenic (as As)	< 0.012	0.2
16.	Mercury (as Hg)	< 0.01	-
17.	Lead (as Pb)	< 0.10	0.1
18.	Cadmium (as Cd)	< 0.05	0.01
19.	Hex. Chromium (as Cr <sup>+6</sup> )	< 0.01	0.05
20.	Selenium (as Se)	< 0.01	0.05
21.	Colour	< 5	300
21.	Odour	Agreeable	-
22.	Taste	Agreeable	-
23.	Dissolved Oxygen (Min.)	6.17	4
24.	BOD 5 days at 20°C	1.00	3
25.	Oil & Grease	< 0.10	0.1
26.	Free Carbon Dioxide (as CO <sub>2</sub> )	7.04	-
27.	Free Ammonia (as NH <sub>3</sub> )	< 0.012	-
28.	Cyanide (as CN)	< 0.002	0.05
29.	Phenolic Compounds(as C <sub>6</sub> H <sub>5</sub> OH)	< 0.002	0.005
30.	Anionic Detergents (as MBAS)	< 0.05	1.0
31.	Total Coliforms	100	5000

### SW-2 Karo River Water After ML area:

The sample after analysis and in comparison with the Standards prescribed in the Surface Water Quality Standard, IS 2296 (Class – C), water used for Drinking with conventional treatment followed by Disinfection is found to be well within the prescribed limits in both the seasons monitored except for the pH, which is found slightly acidic. The results are detailed in **Table No. 6.11**.

**Table No: 6.11**  
**Karo River Water (100 m Downstream of the ML area)**

Sl No	Parameters	Six Monthly Average Value	Surface Water Quality Standard as per IS: 2296 (Class C)
1.	pH Value	5.73	6.5 – 8.5
2.	Electrical Conductivity	39.68	-
3.	Total Dissolved Solids	23.83	1500
4.	Total Hardness (as CaCO <sub>3</sub> )	16.80	-
5.	Chlorides (as Cl)	5.48	600
6.	Sulfate (as SO <sub>4</sub> )	3.91	400
7.	Total Nitrate (as NO <sub>3</sub> )	< 2.20	50
8.	Fluoride (as F)	< 0.05	1.5
9.	Calcium (as Ca)	4.31	-
10.	Magnesium (as Mg)	1.57	-
11.	Copper (as Cu)	< 0.10	1.5
12.	Iron (as Fe)	0.79	50
13.	Manganese (as Mn)	< 0.05	-
14.	Zinc (as Zn)	< 0.02	15
15.	Total Arsenic (as As)	< 0.012	0.2
16.	Mercury (as Hg)	< 0.01	-
17.	Lead (as Pb)	< 0.10	0.1
18.	Cadmium (as Cd)	< 0.05	0.01
19.	Hex. Chromium (as Cr <sup>+6</sup> )	< 0.01	0.05
20.	Selenium (as Se)	< 0.01	0.05
21.	Colour	< 5	300
21.	Odour	Agreeable	-
22.	Taste	Agreeable	-
23.	Dissolved Oxygen (Min.)	6.15	4
24.	BOD 5 days at 20°C	1.00	3
25.	Oil & Grease	< 0.10	0.1
26.	Free Carbon Dioxide (as CO <sub>2</sub> )	6.16	-
27.	Free Ammonia (as NH <sub>3</sub> )	< 0.012	-
28.	Cyanide (as CN)	< 0.002	0.05
29.	Phenolic Compounds(as C <sub>6</sub> H <sub>5</sub> OH)	< 0.002	0.005
30.	Anionic Detergents (as MBAS)	< 0.05	1.0
31.	Total Coliforms	100	5000

**SW-3 Samij Nallah Water Before ML area:**

The sample after analysis and in comparison with the Standards prescribed in the Surface Water Quality Standard, IS 2296 (Class – C), water used for Drinking with conventional treatment followed by Disinfection is found to be well within the prescribed limits in both the seasons monitored except for pH, which is found slightly acidic. The results are detailed in **Table No. 6.12**.

**Table No: 6.12**  
**Samij Nallah Water (100 m upstream of the ML area)**

Sl No	Parameters	Six Monthly Average Value	Surface Water Quality Standard as per IS: 2296 (Class C)
1.	pH Value	6.36	6.5 – 8.5
2.	Electrical Conductivity	76.32	-
3.	Total Dissolved Solids	44.67	1500
4.	Total Hardness (as CaCO <sub>3</sub> )	31.59	-
5.	Chlorides (as Cl)	7.31	600
6.	Sulfate (as SO <sub>4</sub> )	2.48	400
7.	Total Nitrate (as NO <sub>3</sub> )	< 2.20	50

Sl No	Parameters	Six Monthly Average Value	Surface Water Quality Standard as per IS: 2296 (Class C)
8.	Fluoride (as F)	< 0.05	1.5
9.	Calcium (as Ca)	8.35	-
10.	Magnesium (as Mg)	2.61	-
11.	Copper (as Cu)	< 0.10	1.5
12.	Iron (as Fe)	0.25	50
13.	Manganese (as Mn)	< 0.05	-
14.	Zinc (as Zn)	< 0.02	15
15.	Total Arsenic (as As)	< 0.012	0.2
16.	Mercury (as Hg)	< 0.01	-
17.	Lead (as Pb)	< 0.10	0.1
18.	Cadmium (as Cd)	< 0.05	0.01
19.	Hex. Chromium (as Cr <sup>+6</sup> )	< 0.01	0.05
20.	Selenium (as Se)	< 0.01	0.05
21.	Colour	< 5	300
21.	Odour	Agreeable	-
22.	Taste	Agreeable	-
23.	Dissolved Oxygen (Min.)	6.28	4
24.	BOD 5 days at 20°C	1.00	3
25.	Oil & Grease	< 0.10	0.1
26.	Free Carbon Dioxide (as CO <sub>2</sub> )	6.45	-
27.	Free Ammonia (as NH <sub>3</sub> )	< 0.012	-
28.	Cyanide (as CN)	< 0.002	0.05
29.	Phenolic Compounds(as C <sub>6</sub> H <sub>5</sub> OH)	< 0.002	0.005
30.	Anionic Detergents (as MBAS)	< 0.05	1.0
31.	Total Coliforms	100	5000

#### SW-4 Samij Nallah Water After ML area:

The sample after analysis and in comparison with the Standards prescribed in the Surface Water Quality Standard, IS 2296 (Class – C), water used for Drinking with conventional treatment followed by Disinfection is found to be well within the prescribed limits in both the seasons monitored except for pH, which is found slightly acidic. The results are detailed in **Table No. 6.13**.

**Table No: 6.13**  
**Samij Nallah Water (100 m Downstream of the ML area)**

Sl No	Parameters	Six Monthly Average Value	Surface Water Quality Standard as per IS: 2296 (Class C)
1.	pH Value	6.33	6.5 – 8.5
2.	Electrical Conductivity	71.07	-
3.	Total Dissolved Solids	42.00	1500
4.	Total Hardness (as CaCO <sub>3</sub> )	34.27	-
5.	Chlorides (as Cl)	6.81	600
6.	Sulfate (as SO <sub>4</sub> )	2.97	400
7.	Total Nitrate (as NO <sub>3</sub> )	< 2.20	50
8.	Fluoride (as F)	< 0.05	1.5
9.	Calcium (as Ca)	8.08	-
10.	Magnesium (as Mg)	4.21	-
11.	Copper (as Cu)	< 0.10	1.5
12.	Iron (as Fe)	0.34	50
13.	Manganese (as Mn)	< 0.05	-
14.	Zinc (as Zn)	< 0.02	15
15.	Total Arsenic (as As)	< 0.012	0.2
16.	Mercury (as Hg)	< 0.01	-
17.	Lead (as Pb)	< 0.10	0.1
18.	Cadmium (as Cd)	< 0.05	0.01

SI No	Parameters	Six Monthly Average Value	Surface Water Quality Standard as per IS: 2296 (Class C)
19.	Hex. Chromium (as Cr <sup>+6</sup> )	< 0.01	0.05
20.	Selenium (as Se)	< 0.01	0.05
21.	Colour	< 5	300
21.	Odour	Agreeable	-
22.	Taste	Agreeable	-
23.	Dissolved Oxygen (Min.)	6.17	4
24.	BOD 5 days at 20°C	1.00	3
25.	Oil & Grease	< 0.10	0.1
26.	Free Carbon Dioxide (as CO <sub>2</sub> )	5.87	-
27.	Free Ammonia (as NH <sub>3</sub> )	< 0.012	-
28.	Cyanide (as CN)	< 0.002	0.05
29.	Phenolic Compounds(as C <sub>6</sub> H <sub>5</sub> OH)	< 0.002	0.005
30.	Anionic Detergents (as MBAS)	< 0.05	1.0
31.	Total Coliforms	100	5000

#### SW-5 Kuradihi Nallah Water Before ML area:

The sample after analysis and in comparison with the Standards prescribed in the Surface Water Quality Standard, IS 2296 (Class – C), water used for Drinking with conventional treatment followed by Disinfection is found to be well within the prescribed limits in both the seasons monitored. The results are detailed in **Table No. 6.14**.

**Table No: 6.14**  
**Kuradihi Nallah Water (100 m upstream of the ML area)**

SI No	Parameters	Six Monthly Average Value	Surface Water Quality Standard as per IS: 2296 (Class C)
1.	pH Value	7.03	6.5 – 8.5
2.	Electrical Conductivity	186.78	-
3.	Total Dissolved Solids	111.83	1500
4.	Total Hardness (as CaCO <sub>3</sub> )	85.36	-
5.	Chlorides (as Cl)	7.80	600
6.	Sulfate (as SO <sub>4</sub> )	< 0.50	400
7.	Total Nitrate (as NO <sub>3</sub> )	< 2.20	50
8.	Fluoride (as F)	< 0.05	1.5
9.	Calcium (as Ca)	21.01	-
10.	Magnesium (as Mg)	8.01	-
11.	Copper (as Cu)	< 0.10	1.5
12.	Iron (as Fe)	0.28	50
13.	Manganese (as Mn)	< 0.05	-
14.	Zinc (as Zn)	< 0.02	15
15.	Total Arsenic (as As)	< 0.012	0.2
16.	Mercury (as Hg)	< 0.01	-
17.	Lead (as Pb)	< 0.10	0.1
18.	Cadmium (as Cd)	< 0.05	0.01
19.	Hex. Chromium (as Cr <sup>+6</sup> )	< 0.01	0.05
20.	Selenium (as Se)	< 0.01	0.05
21.	Colour	< 5	300
21.	Odour	Agreeable	-
22.	Taste	Agreeable	-
23.	Dissolved Oxygen (Min.)	6.13	4
24.	BOD 5 days at 20°C	1.00	3
25.	Oil & Grease	< 0.10	0.1
26.	Free Carbon Dioxide (as CO <sub>2</sub> )	6.45	-
27.	Free Ammonia (as NH <sub>3</sub> )	< 0.012	-
28.	Cyanide (as CN)	< 0.002	0.05



Sl No	Parameters	Six Monthly Average Value	Surface Water Quality Standard as per IS: 2296 (Class C)
29.	Phenolic Compounds(as C <sub>6</sub> H <sub>5</sub> OH)	< 0.002	0.005
30.	Anionic Detergents (as MBAS)	< 0.05	1.0
31.	Total Coliforms	70	5000

#### SW-6 Kuradihi Nallah Water After ML area:

The sample after analysis and in comparison with the Standards prescribed in the Surface Water Quality Standard, IS 2296 (Class – C), water used for Drinking with conventional treatment followed by Disinfection is found to be well within the prescribed limits in both the seasons monitored. The results are detailed in **Table No. 6.15**.

**Table No: 6.15**  
**Kuradihi Nallah Water (100 m Downstream of the ML area)**

Sl No	Parameters	Six Monthly Average Value	Surface Water Quality Standard as per IS: 2296 (Class C)
1.	pH Value	7.11	6.5 – 8.5
2.	Electrical Conductivity	114.40	-
3.	Total Dissolved Solids	66.33	1500
4.	Total Hardness (as CaCO <sub>3</sub> )	53.09	-
5.	Chlorides (as Cl)	5.81	600
6.	Sulfate (as SO <sub>4</sub> )	< 0.50	400
7.	Total Nitrate (as NO <sub>3</sub> )	< 2.20	50
8.	Fluoride (as F)	< 0.05	1.5
9.	Calcium (as Ca)	13.20	-
10.	Magnesium (as Mg)	4.90	-
11.	Copper (as Cu)	< 0.10	1.5
12.	Iron (as Fe)	0.32	50
13.	Manganese (as Mn)	< 0.05	-
14.	Zinc (as Zn)	< 0.02	15
15.	Total Arsenic (as As)	< 0.012	0.2
16.	Mercury (as Hg)	< 0.01	-
17.	Lead (as Pb)	< 0.10	0.1
18.	Cadmium (as Cd)	< 0.05	0.01
19.	Hex. Chromium (as Cr <sup>+6</sup> )	< 0.01	0.05
20.	Selenium (as Se)	< 0.01	0.05
21.	Colour	< 5	300
21.	Odour	Agreeable	-
22.	Taste	Agreeable	-
23.	Dissolved Oxygen (Min.)	6.17	4
24.	BOD 5 days at 20°C	1.00	3
25.	Oil & Grease	< 0.10	0.1
26.	Free Carbon Dioxide (as CO <sub>2</sub> )	5.28	-
27.	Free Ammonia (as NH <sub>3</sub> )	< 0.012	-
28.	Cyanide (as CN)	< 0.002	0.05
29.	Phenolic Compounds(as C <sub>6</sub> H <sub>5</sub> OH)	< 0.002	0.005
30.	Anionic Detergents (as MBAS)	< 0.05	1.0
31.	Total Coliforms	700	5000

#### SW-7 Teherai Nallah Water Before ML area:

The sample after analysis and in comparison with the Standards prescribed in the Surface Water Quality Standard, IS 2296 (Class – C), water used for Drinking with conventional treatment followed by Disinfection is found to be well within the prescribed limits in both the seasons monitored except for pH, which is found slightly acidic. The results are detailed in **Table No. 6.16**.

**Table No: 6.16**  
**Teherai Nallah Water (100 m upstream of the ML area)**

Sl No	Parameters	Six Monthly Average Value	Surface Water Quality Standard as per IS: 2296 (Class C)
1.	pH Value	6.09	6.5 – 8.5
2.	Electrical Conductivity	46.63	-
3.	Total Dissolved Solids	27.83	1500
4.	Total Hardness (as CaCO <sub>3</sub> )	20.83	-
5.	Chlorides (as Cl)	4.82	600
6.	Sulfate (as SO <sub>4</sub> )	< 0.50	400
7.	Total Nitrate (as NO <sub>3</sub> )	< 2.20	50
8.	Fluoride (as F)	< 0.05	1.5
9.	Calcium (as Ca)	4.58	-
10.	Magnesium (as Mg)	2.29	-
11.	Copper (as Cu)	< 0.10	1.5
12.	Iron (as Fe)	0.30	50
13.	Manganese (as Mn)	< 0.05	-
14.	Zinc (as Zn)	< 0.02	15
15.	Total Arsenic (as As)	< 0.012	0.2
16.	Mercury (as Hg)	< 0.01	-
17.	Lead (as Pb)	< 0.10	0.1
18.	Cadmium (as Cd)	< 0.05	0.01
19.	Hex. Chromium (as Cr <sup>+6</sup> )	< 0.01	0.05
20.	Selenium (as Se)	< 0.01	0.05
21.	Colour	< 5	300
21.	Odour	Agreeable	-
22.	Taste	Agreeable	-
23.	Dissolved Oxygen (Min.)	6.08	4
24.	BOD 5 days at 20°C	1.00	3
25.	Oil & Grease	< 0.10	0.1
26.	Free Carbon Dioxide (as CO <sub>2</sub> )	6.16	-
27.	Free Ammonia (as NH <sub>3</sub> )	< 0.012	-
28.	Cyanide (as CN)	< 0.002	0.05
29.	Phenolic Compounds(as C <sub>6</sub> H <sub>5</sub> OH)	< 0.002	0.005
30.	Anionic Detergents (as MBAS)	< 0.05	1.0
31.	Total Coliforms	70	5000

**SW-8 Teherai Nallah Water After ML area:**

The sample after analysis and in comparison with the Standards prescribed in the Surface Water Quality Standard, IS 2296 (Class – C), water used for Drinking with conventional treatment followed by Disinfection is found to be well within the prescribed limits in both the seasons monitored except for pH, which is found slightly acidic. The results are detailed in **Table No. 6.17**.

**Table No: 6.17**  
**Teherai Nallah Water (100 m Downstream of the ML area)**

Sl No	Parameters	Six Monthly Average Value	Surface Water Quality Standard as per IS: 2296 (Class C)
1.	pH Value	6.02	6.5 – 8.5
2.	Electrical Conductivity	44.12	-
3.	Total Dissolved Solids	26.67	1500
4.	Total Hardness (as CaCO <sub>3</sub> )	19.49	-
5.	Chlorides (as Cl)	4.81	600
6.	Sulfate (as SO <sub>4</sub> )	< 0.50	400
7.	Total Nitrate (as NO <sub>3</sub> )	< 2.20	50

Sl No	Parameters	Six Monthly Average Value	Surface Water Quality Standard as per IS: 2296 (Class C)
8.	Fluoride (as F)	< 0.05	1.5
9.	Calcium (as Ca)	5.12	-
10.	Magnesium (as Mg)	1.64	-
11.	Copper (as Cu)	< 0.10	1.5
12.	Iron (as Fe)	0.41	50
13.	Manganese (as Mn)	< 0.05	-
14.	Zinc (as Zn)	< 0.02	15
15.	Total Arsenic (as As)	< 0.012	0.2
16.	Mercury (as Hg)	< 0.01	-
17.	Lead (as Pb)	< 0.10	0.1
18.	Cadmium (as Cd)	< 0.05	0.01
19.	Hex. Chromium (as Cr <sup>+6</sup> )	< 0.01	0.05
20.	Selenium (as Se)	< 0.01	0.05
21.	Colour	< 5	300
21.	Odour	Agreeable	-
22.	Taste	Agreeable	-
23.	Dissolved Oxygen (Min.)	6.10	4
24.	BOD 5 days at 20°C	1.00	3
25.	Oil & Grease	< 0.10	0.1
26.	Free Carbon Dioxide (as CO <sub>2</sub> )	5.57	-
27.	Free Ammonia (as NH <sub>3</sub> )	< 0.012	-
28.	Cyanide (as CN)	< 0.002	0.05
29.	Phenolic Compounds(as C <sub>6</sub> H <sub>5</sub> OH)	< 0.002	0.005
30.	Anionic Detergents (as MBAS)	< 0.05	1.0
31.	Total Coliforms	670	5000

#### **GW-1 Mines Office Bore Well**

In comparison of the parameters with the prescribed limits of IS 10500, it was found that the water quality is good in both the months but parameter like pH is found to be slightly acidic in both the months. All other parameters are well within the limit. The detail results are given in the **Table No 6.18 & 6.19.**

#### **GW-2 Village Dengula Dug Well. 1**

In comparison of the parameters with the prescribed limits of IS 10500, it was found that the water quality is good but parameter like pH is found to be slightly acidic in both the months. The detail results are given in the **Table No 6.18 & 6.19.**

#### **GW-3 Village Raikela Bore Well**

In comparison of the parameters with the prescribed limits of IS 10500, it was found that the water quality is good in both the months except the parameter like pH is exceeding the prescribed limits and found to be slightly acidic in both the months. The detail results are given in the **Table No 6.18 & 6.19.**

#### **GW-4 Village Bandhal Dug Well**

In comparison of the parameters with the prescribed limits of IS 10500, it was found that the water quality is good in both the months except the parameter like pH is exceeding the prescribed limits and found to be slightly acidic in both the months. The detail results are given in the **Table No 6.18 & 6.19.**

### GW-5 Bore Well Near Bottom Weigh Bridge

In comparison of the parameters with the prescribed limits of IS 10500, it was found that the water quality is good except, pH is found to be slightly acidic in both the months. The detail results are given in the Table No 6.18 & 6.19.

**Table No: 6.18**  
**Ground Water Quality Data for the Month of May**

Sl No	Parameters	Sample Collected during month of May					Max. Desirable Limit As per IS 10500:2012
		GW1	GW2	GW3	GW4	GW5	
1.	Turbidity	0.10	1.2	0.10	1.3	0.50	5.0
2.	pH Value	6.52	5.31	5.20	5.82	5.11	6.5 – 8.5
3.	Total Hardness (as CaCO <sub>3</sub> )	16.23	20.32	28.45	56.89	16.23	600
4.	Iron (as Fe)	0.26	0.28	0.30	0.24	0.05	0.3
5.	Chlorides (as Cl)	6.99	7.99	4.99	7.99	4.99	1000
6.	Total Dissolved Solids	28	33	34	80	27	2000
7.	Electrical Conductivity	48.3	50.8	52.3	120.70	41.1	-
8.	Calcium (as Ca)	4.89	4.89	4.89	19.55	3.23	200
9.	Magnesium (as Mg)	1.0	1.98	3.95	1.97	1.97	100
10.	Copper (as Cu)	< 0.10	< 0.10	< 0.10	< 0.10	< 0.10	1.5
11.	Manganese (as Mn)	< 0.05	< 0.05	< 0.05	< 0.05	< 0.05	0.3
12.	Sulfate (as SO <sub>4</sub> )	1.3	1.04	0.55	1.48	< 0.50	400
13.	Total Nitrate (as NO <sub>3</sub> )	< 2.20	< 2.20	< 2.20	< 2.20	< 2.20	45
14.	Total Alkalinity (as CaCO <sub>3</sub> )	12	12	20	40	16	600
15.	Acidity	16	24	34	12	14	-
16.	Sulphide (as H <sub>2</sub> S)	< 0.02	< 0.02	< 0.02	< 0.02	< 0.02	0.05
17.	Sodium (as Na)	1.08	3.22	2.06	5.29	2.98	-
18.	Potassium (as K)	1.01	1.20	1.32	2.99	1.20	-
19.	Fluoride (as F)	< 0.05	< 0.05	< 0.05	< 0.05	< 0.05	1.5
20.	Cadmium (as Cd)	ND	ND	ND	ND	ND	0.003
21.	Lead (as Pb)	ND	ND	ND	ND	ND	0.01
22.	Arsenic (as As)	ND	ND	ND	ND	ND	0.05
23.	Mercury (as Hg)	ND	ND	ND	ND	ND	0.001
24.	Selenium (as Se)	ND	ND	ND	ND	ND	0.01
25.	Nickel (as Ni)	ND	ND	ND	ND	ND	0.02
26.	Zinc (as Zn)	ND	ND	ND	ND	ND	15.0
27.	Total Chromium (as Cr)	ND	ND	ND	ND	ND	0.05
28.	Colour	< 5	< 5	< 5	< 5	< 5	15
29.	Odour	Agreeable	Agreeable	Agreeable	Agreeable	Agreeable	Agreeable
30.	Taste	Agreeable	Agreeable	Agreeable	Agreeable	Agreeable	Agreeable
31.	Temperature	26.2	26.4	26.3	26.2	26.2	-
32.	Residual Free Chlorine	0.14	0.24	0.08	0.10	0.06	1.0 (min)
33.	Total Bacterial Count	Absent	Absent	Absent	Absent	Absent	Absent
34.	E coli	Absent	Absent	Absent	Absent	Absent	Absent

**Table No: 6.19**  
**Ground Water Quality Data for the Month of August**

Sl No	Parameters	Sample Collected during month of August					Max. Desirable Limit As per IS 10500:2012
		GW1	GW2	GW3	GW4	GW5	
1.	Turbidity	0.10	1.1	0.10	1.3	0.10	5.0
2.	pH Value	5.95	5.96	5.75	6.10	5.75	6.5 – 8.5

Sl No	Parameters	Sample Collected during month of August					Max. Desirable Limit As per IS 10500:2012
		GW1	GW2	GW3	GW4	GW5	
3.	Total Hardness (as CaCO <sub>3</sub> )	36.29	48.38	44.35	116.93	12.09	600
4.	Iron (as Fe)	0.03	0.21	0.21	0.33	0.28	0.3
5.	Chlorides (as Cl)	5.99	8.99	4.99	23.99	5.99	1000
6.	Total Dissolved Solids	50	48	63	200	24	2000
7.	Electrical Conductivity	81.5	76.6	102.8	333	39.5	-
8.	Calcium (as Ca)	11.31	11.31	14.54	38.78	3.23	200
9.	Magnesium (as Mg)	1.96	4.89	1.96	4.89	1.0	100
10.	Copper (as Cu)	< 0.10	< 0.10	< 0.10	< 0.10	< 0.10	1.5
11.	Manganese (as Mn)	< 0.05	< 0.05	< 0.05	< 0.05	< 0.05	0.3
12.	Sulfate (as SO <sub>4</sub> )	0.93	1.51	0.91	0.73	< 0.50	400
13.	Total Nitrate (as NO <sub>3</sub> )	< 2.20	< 2.20	< 2.20	< 2.20	< 2.20	45
14.	Total Alkalinity (as CaCO <sub>3</sub> )	28	16	36	112	12	600
15.	Acidity	10	06	08	08	20	-
16.	Sulphide (as H <sub>2</sub> S)	< 0.02	< 0.02	< 0.02	< 0.02	< 0.02	0.05
17.	Sodium (as Na)	3.94	3.22	6.96	18.86	3.12	-
18.	Potassium (as K)	1.06	1.20	1.54	9.26	0.98	-
19.	Fluoride (as F)	< 0.05	< 0.05	< 0.05	< 0.05	< 0.05	1.5
20.	Cadmium (as Cd)	ND	ND	ND	ND	ND	0.003
21.	Lead (as Pb)	ND	ND	ND	ND	ND	0.01
22.	Arsenic (as As)	ND	ND	ND	ND	ND	0.05
23.	Mercury (as Hg)	ND	ND	ND	ND	ND	0.001
24.	Selenium (as Se)	ND	ND	ND	ND	ND	0.01
25.	Nickel (as Ni)	ND	ND	ND	ND	ND	0.02
26.	Zinc (as Zn)	ND	ND	ND	ND	ND	15.0
27.	Total Chromium (as Cr)	ND	ND	ND	ND	ND	0.05
28.	Colour	< 5	< 5	< 5	< 5	< 5	15
29.	Odour	Agreeable	Agreeable	Agreeable	Agreeable	Agreeable	Agreeable
30.	Taste	Agreeable	Agreeable	Agreeable	Agreeable	Agreeable	Agreeable
31.	Temperature	25.3	25.1	25.0	25.3	28.0	-
32.	Residual Free Chlorine	0.10	0.18	0.10	0.24	0.08	1.0 (min)
33.	Total Bacterial Count	Absent	Absent	Absent	Absent	Absent	Absent
34.	E coli	Absent	Absent	Absent	Absent	Absent	Absent

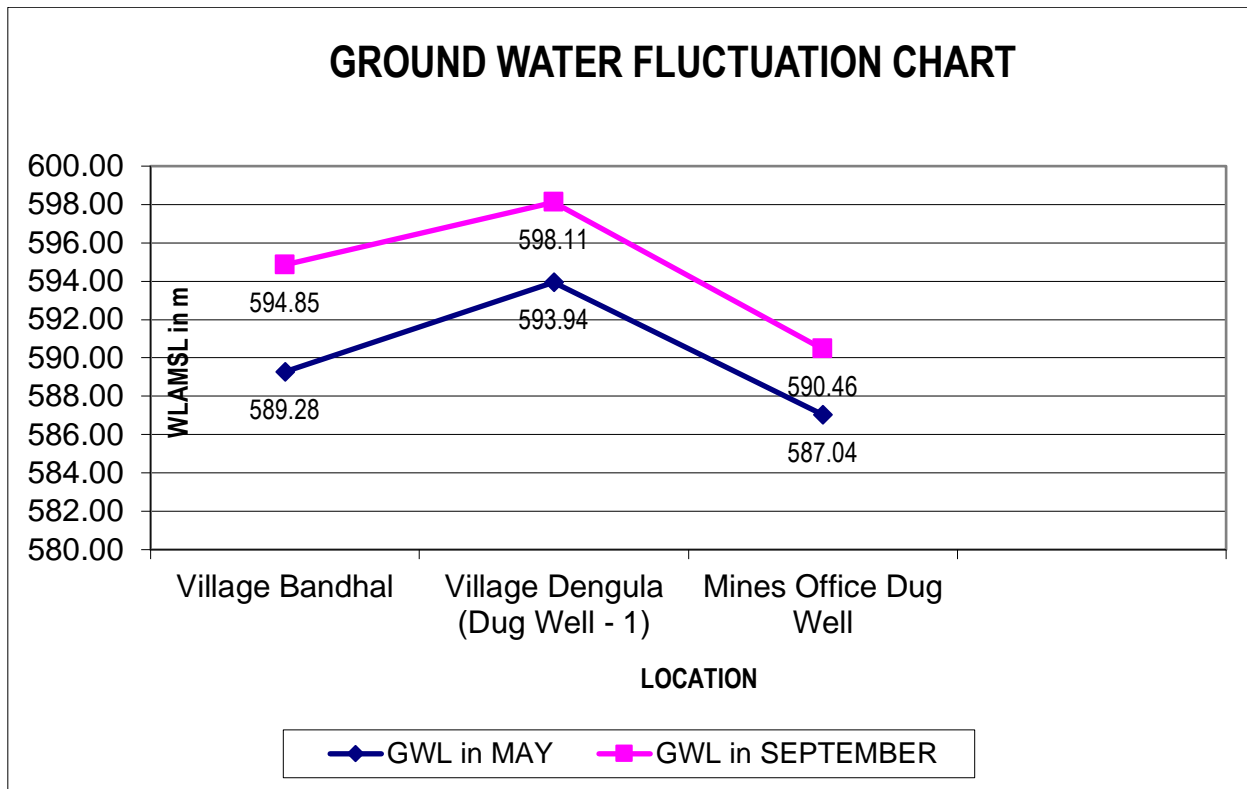
### 5.3 Ground Water Level Data

The ground water level measured from the existing dug wells mentioned above are found to be varying significantly i.e. in the month of June the level was found to be low in comparison to the month of September. The detail data is given below in the **Table No 6.20**, with a graphical representation of the fluctuation in **Figure No: 6.10**.

**Table No 6.20: Ground Water Level Data**

Sl No	Location	Ground Level in m AMSL	Ground Water Level in m AMSL		Height of Water Column in m	
			May	September	May	September
1	Village Dengula (Dug Well - 1)	599.8	593.94	598.11	2.59	6.76
2	Village Bandhal	598.6	589.28	594.85	2.43	8.00
3	Mines Office Dug Well	591.9	587.04	590.46	0.39	3.81

Figure No 6.10 : Seasonal Fluctuation of Ground Water Level



#### 5.4 Noise Level Monitoring Data

Noise monitoring was carried out at five different locations of the mine every week. Four more locations were fixed for monitoring of noise level in the buffer zone on monthly basis. The Sound Pressure Level recorded are calculated for Lmin, Lmax, Leq, for HEMM working within the mining area and Lmin, Lmax, Leq Day-time and Leq Night-time for buffer zone locations. All the noise level data from April to September with average Leq values are given in the **Table No 6.21**

##### N-1 Drilling Machine

The noise level range between 92.0 and 85.6 dB(A) and the average Leq value is 90.1 dB(A) during the study period.

On comparison of the results with Permissible Exposure limits in case of continuous Noise as per OSHA, USA it was found that the noise level is well within the exposure limits.

##### N-2 Excavator Operator's Cabin

The noise level range between 89.5 and 83.1 dB(A) and the average Leq value is 87.1 dB(A) during the study period.

On comparison of the results with Permissible Exposure limits in case of continuous Noise as per OSHA, USA it was found that the noise level is well within the exposure limits.

##### N-3 Loader Operator's Cabin

The noise level range between 83.5 and 80.5 dB(A) and the average Leq value is 82.0 dB(A) during the study period.

On comparison of the results with Permissible Exposure limits in case of continuous Noise as per OSHA, USA it was found that the noise level is well within the exposure limits.

#### **N-4 Dumper Operator's Cabin**

The noise level range between 89.4 and 79.5 dB(A) and the average Leq value is 82.5 dB(A) during the study period.

On comparison of the results with Permissible Exposure limits in case of continuous Noise as per OSHA, USA it was found that the noise level is well within the exposure limits.

#### **N-5 Working Pit Area during Operation of HEMM**

The noise level range between 78.4 and 70.0 dB(A) and the average Leq Day-time value is 69.9 dB(A) during the study period.

On comparison of the results with ambient air quality standards in respect of noise by CPCB, it was found that the ambient noise levels from this location was well within the standards for Industrial area for both day and night time.

#### **N-6 Mines Office Area**

The noise level range between 76.4 and 41.2 dB(A) and the average Leq Day-time and Leq Night-time values are 68.1 and 45.5 dB(A) respectively during the study period.

On comparison of the results with ambient air quality standards in respect of noise by CPCB, it was found that the ambient noise levels from this location was well within the standards for Industrial area for both day and night time.

#### **N-7 Village Dengula**

The noise level range between 72.0 and 41.3 dB(A) and the average Leq Day-time and Leq Night-time values are 64.7 and 46.2 dB(A) respectively during the study period.

On comparison of the results with ambient air quality standards in respect of noise by CPCB, it was found that the ambient noise levels from this location was well within the standards for Residential area for both day and night time.

#### **N-8 Village Raikela**

The noise level range between 75.8 and 41.3 dB(A) and the average Leq Day-time and Leq Night-time values are 68.5 and 45.8 dB(A) respectively during the study period.

On comparison of the results with ambient air quality standards in respect of noise by CPCB, it was found that the ambient noise levels from this location was well within the standards for Residential area for both day and night time.

#### **N-9 Village Bandhal**

The noise level range between 70.2 and 41.6 dB(A) and the average Leq Day-time and Leq Night-time values are 62.6 and 45.1 dB(A) respectively during the study period.

On comparison of the results with ambient air quality standards in respect of noise by CPCB, it was found that the ambient noise levels from this location was well within the standards for Residential area for both day and night time.

Table No: 6.21

Noise Level Data from April to September

<b>DRILL MACHINE</b>	<b>APR</b>	<b>MAY</b>	<b>JUN</b>	<b>JUL</b>	<b>AUG</b>	<b>SEPT</b>	<b>AVERAGE VALUE</b>
Leq dB(A)	87.6	90.4	91.6	90.7	85.7	91.5	
Leq dB(A)	88.4	89.7	92.0	91.3	85.6	89.9	
Leq dB(A)	90.4	90.0	91.2	91.1	91.2	89.8	
Leq dB(A)	90.8	91.5	91.1	91.1	91.2	89.4	
<b>Average Leq dB(A)</b>	89.3	90.4	91.5	91.1	88.4	90.2	90.1
<b>Lmax</b>	90.8	91.5	92.0	91.3	91.2	91.5	92.0
<b>Lmin</b>	87.6	89.7	91.1	90.7	85.6	89.4	85.6
<b>EXCAVATOR OPERATOR CABIN</b>	<b>APR</b>	<b>MAY</b>	<b>JUN</b>	<b>JUL</b>	<b>AUG</b>	<b>SEPT</b>	<b>AVERAGE VALUE</b>
Leq dB(A)	86.4	87.3	88.7	89.3	85.5	88.1	
Leq dB(A)	83.1	87.0	88.4	88.8	85.2	86.6	
Leq dB(A)	84.5	86.5	88.2	87.5	84.5	89.5	
Leq dB(A)	85.2	88.3	88.2	89.1	85.2	88.1	
<b>Average Leq dB(A)</b>	84.8	87.3	88.4	88.7	85.1	88.1	87.1
<b>Lmax</b>	86.4	88.3	88.7	89.3	85.5	89.5	89.5
<b>Lmin</b>	83.1	86.5	88.2	87.5	84.5	86.6	83.1
<b>LOADER OPERATOR CABIN</b>	<b>APR</b>	<b>MAY</b>	<b>JUN</b>	<b>JUL</b>	<b>AUG</b>	<b>SEPT</b>	<b>AVERAGE VALUE</b>
Leq dB(A)	83.5	82.4	82.4	82.4	81.1	82.1	
Leq dB(A)	83.1	80.8	81.8	82.0	83.1	82.1	
Leq dB(A)	82.0	82.1	81.7	81.9	81.4	81.9	
Leq dB(A)	81.1	80.5	81.5	82.3	82.3	82.9	
<b>Average Leq dB(A)</b>	82.4	81.5	81.9	82.2	82.0	82.3	82.0
<b>Lmax</b>	83.5	82.4	82.4	82.4	83.1	82.9	83.5
<b>Lmin</b>	81.1	80.5	81.5	81.9	81.1	81.9	80.5
<b>DUMPER OPERATOR CABIN</b>	<b>APR</b>	<b>MAY</b>	<b>JUN</b>	<b>JUL</b>	<b>AUG</b>	<b>SEPT</b>	<b>AVERAGE VALUE</b>
Leq dB(A)	85.4	80.4	82.4	82.1	81.6	82.7	
Leq dB(A)	81.4	79.5	81.4	81.8	84.0	88.0	
Leq dB(A)	81.8	82.0	81.0	83.1	82.3	89.4	
Leq dB(A)	80.6	81.0	82.1	82.0	81.6	82.9	
<b>Average Leq dB(A)</b>	82.3	80.7	81.7	82.3	82.4	85.8	82.5
<b>Lmax</b>	85.4	82.0	82.4	83.1	84.0	89.4	89.4
<b>Lmin</b>	80.6	79.5	81.0	81.8	81.6	82.7	79.5
<b>MINES WORKING AREA</b>	<b>APR</b>	<b>MAY</b>	<b>JUN</b>	<b>JUL</b>	<b>AUG</b>	<b>SEPT</b>	<b>AVERAGE VALUE</b>
Leq dB(A)	76.8	72.7	72.3	73.4	73.4	75.6	
Leq dB(A)	76.6	74.2	75.2	73.8	72.7	75.8	
Leq dB(A)	78.4	73.0	73.0	73.3	71.5	76.0	



Leq dB(A)	70.7	73.1	74.8	74.2	70.0	77.0	
Average Leq dB(A)	75.6	73.3	73.8	73.7	71.9	50.9	69.9
Lmax	78.4	74.2	75.2	74.2	73.4	77.0	78.4
Lmin	70.7	72.7	72.3	73.3	70.0	75.6	70.0
<b>MINES OFFICE AREA</b>	<b>APR</b>	<b>MAY</b>	<b>JUN</b>	<b>JUL</b>	<b>AUG</b>	<b>SEPT</b>	<b>AVERAGE VALUE</b>
Leq Day Time dB(A)	65.5	69.1	69.8	68.9	68.7	66.6	68.1
Leq Night Time dB(A)	45.1	47.3	44.7	45.5	44.2	46.2	45.5
Lmax	74.6	77.5	78.4	75.7	76.3	75.9	76.4
Lmin	41.7	41.3	41.2	41.4	40.3	41.2	41.2
<b>VILLAGE DENGULA</b>	<b>APR</b>	<b>MAY</b>	<b>JUN</b>	<b>JUL</b>	<b>AUG</b>	<b>SEPT</b>	<b>AVERAGE VALUE</b>
Leq Day Time dB(A)	57.8	64.6	68.9	67.0	66.2	63.5	64.7
Leq Night Time dB(A)	47.1	47.3	44.6	45.0	44.4	48.6	46.2
Lmax	64.8	73.5	76.3	73.5	74.7	69.2	72.0
Lmin	41.5	41.2	41.2	41.3	41.3	41.2	41.3
<b>VILLAGE RAIKELA</b>	<b>APR</b>	<b>MAY</b>	<b>JUN</b>	<b>JUL</b>	<b>AUG</b>	<b>SEPT</b>	<b>AVERAGE VALUE</b>
Leq Day Time dB(A)	62.6	71.9	71.2	69.3	69.8	66.2	68.5
Leq Night Time dB(A)	44.8	44.0	46.3	45.5	44.2	49.7	45.8
Lmax	69.4	78.7	79.6	76.4	77.3	73.4	75.8
Lmin	41.3	41.3	41.3	41.7	41.1	41.3	41.3
<b>VILLAGE BANDHAL</b>	<b>APR</b>	<b>MAY</b>	<b>JUN</b>	<b>JUL</b>	<b>AUG</b>	<b>SEPT</b>	<b>AVERAGE VALUE</b>
Leq Day Time dB(A)	60.8	63.0	67.3	63.1	60.9	60.6	62.6
Leq Night Time dB(A)	45.0	45.8	46.1	44.4	43.1	46.1	45.1
Lmax	68.8	69.5	75.6	71.4	68.2	67.9	70.2
Lmin	41.2	43.7	41.1	41.2	41.2	41.3	41.6

### 5.5 Soil Quality Monitoring Data

Soil was collected from two locations during the month of June. The analysis data reveals that the soil quality is good in both the locations. Soil is acidic near OB dump area. Iron content of the soil is on the higher side which is very much natural for the kind of soil. Phosphorus, Available Potassium & Organic Matter content of the soil is on the lower side for soil near OB dump. All other parameters are good. All the data are given in detail in the **Table No 6.22**.

**Table No 6.22**  
**Soil Quality Data in the Month of June**

Sl. No.	Parameter	Method of Analysis	Unit	S1	S2
1.	pH (1:2 Suspension)	IS:2720 (Part 26): 1987, RA 2016	-	5.86	6.41
2.	Electrical Conductivity	IS 14767: 2000, RA 2016	µS/cm	312	114
3.	Available Phosphorous (as P <sub>2</sub> O <sub>5</sub> )	CPL/SOP/03/P, Issue No: 03, Dtd.: 23.10.2107	Kg/ha	6.761	2.406
4.	Available Potassium (as K <sub>2</sub> O)	CPL/SOP/03/K, Issue No: 03, Dtd.: 23.10.2107	Kg/ha	206.76	21
5.	Organic Carbon	IS 2720 (Part 22), 1972 - RA 2015	%	0.09	2.27
6.	Available Iron (as Fe)	CPL/SOP/03/Fe, Issue No: 03, Dtd.: 23.10.2107 Methods Manual Soil Testing in India, Department of Agriculture & Cooperation, Ministry of Agriculture, Government of India, January, 2011	mg/kg	12.24	7.46
7.	Available Manganese (as Mn)	CPL/SOP/03/Mn, Issue No: 03, Dtd.: 23.10.2107 Methods Manual Soil Testing in India, Department of Agriculture & Cooperation, Ministry of Agriculture, Government of India, January, 2011	mg/kg	5.42	2.92
8.	Available Nitrogen (as N)	CPL/SOP/03/N, Issue No: 03, Dtd.: 23.10.2107	Kg/ha	263.424	351.232
9.	Organic Matter	IS 2720 (Part 22), 1972 - RA 2015	%	0.16	3.91

## 6.0 CONCLUSION

### 6.1 Ambient Air Quality

It is concluded from the above study that the overall ambient air quality of the Raikela & Tantra Iron Ore Mines of Penguin Trading & Agencies Ltd. is good and the action taken by the mines authority were quite satisfactory. No results in the core as well as buffer are exceeding the prescribed limit.

### 6.2 Fugitive Dust Emission Monitoring

It is concluded from the above study that the fugitive dust emission from the five locations monitored at the Raikela & Tantra Iron Ore Mines of Penguin Trading & Agencies Ltd. is good and the action taken by the mines authority were quite satisfactory. No results are exceeding the prescribed limit of 1200 µg/m<sup>3</sup> as per MOEF notification dated 4<sup>th</sup> October 2010 for Iron Ore mining operations.

### 6.3 Water Quality

The surface water quality of all the locations monitored are found to be well within the prescribed standards as per IS 2296 (Class – C) and the ground water quality of the entire area was also good except pH, which was found to be slightly acidic and less than 6.5.

#### **6.4 Ground Water Level**

There is no problem in the availability ground water of the area.

#### **6.5 Noise level**

Noise monitoring results show that noise levels are well within the limits at all the stations, and there is no problem in the area due to noise from the mining activity.

#### **6.6 Soil Quality**

Soil quality results show that both the locations have good quality soil and there is no contamination done due to mining activity.

\* \* \*